

SPARE PARTS

Note : To place spare parts order, use :

- The serial number of the machine.
- The description and the part number

ConstructionParts.com

888-634-4289

VIBRATING ELEMENTS LIST

Vibrating elements 42V-3-200Hz	
4812050334	Vibrating element AX36 42V-3-200Hz
4700367292	Vibrating element AX40 42V-3-200Hz
4700367293	Vibrating element AX48 42V-3-200Hz
4700367294	Vibrating element AX56 42V-3-200Hz
4700367295	Vibrating element AX65 42V-3-200Hz
Vibrating elements 115V-3-200Hz	
4700367296	Vibrating element AX40 115V-3-200Hz
4700367297	Vibrating element AX48 115V-3-200Hz
4700367298	Vibrating element AX56 115V-3-200Hz
4700367299	Vibrating element AX65 115V-3-200Hz
Vibrating elements for rigid cane 42V-3-200Hz	
4812050522	Vibrating element AX36C 42V-3-200Hz
4812050523	Vibrating element AX40C 42V-3-200Hz
4812050524	Vibrating element AX48C 42V-3-200Hz
4812050525	Vibrating element AX56C 42V-3-200Hz
Vibrating elements for devibrated handle 42V-3-200Hz	
4700367292	Vibrating element AX40E 42V-3-200Hz
4700367293	Vibrating element AX48E 42V-3-200Hz
4700367294	Vibrating element AX56E 42V-3-200Hz
Vibrating elements for devibrated handle 115V-3-200Hz	
4700367296	Vibrating element AX40E 115V-3-200Hz
4700367297	Vibrating element AX48E 115V-3-200Hz
4700367298	Vibrating element AX56E 115V-3-200Hz
Vibrating elements with rubber end cap 42V-3-200Hz	
4812050526	Vibrating element AX36R 42V-3-200Hz
4812050527	Vibrating element AX40R 42V-3-200Hz
4812050528	Vibrating element AX48R 42V-3-200Hz
4812050529	Vibrating element AX56R 42V-3-200Hz
4812050530	Vibrating element AX65R 42V-3-200Hz
Vibrating elements for concrete paver poker 42V-3-200Hz	
4812050596	Vibrating element AX65P 42V-3-200Hz
Vibrating elements for slip form poker 42V-3-200Hz	
4812050597	Vibrating element AX48AU 42V-3-200Hz

ConstructionParts.com

ConstructionParts.com

888-634-4289

VIBRATING ELEMENT AX36

ConstructionParts.com

888-634-4289

Ref.	Description	P/N	AX36 42V Qty	AX36C 42V Qty	AX36R 42V Qty
1	End cap	4700187941	1	1	-
	Elastomer end cap	4700137141	-	-	1
2	Stator tube	4700187937	1	1	1
3	End piece	4812050333	1	-	1
		4700137174	-	1	-
4	Excenter	4700187942	2	2	2
5	Rotor	4700187938	1	1	1
6	Bearing holder	4700187943	1	1	1
7	Bearing*	4700186841	1	1	1
8	Bearing*	4700181657	1	1	1
9	Ring*	4700181659	1	1	1
11	Screw	4700186054	2	2	2
12	Washer	4700367896	2	2	2
13	O Ring*	4700160316	1	1	1
14	Rubber gasket*	4700186799	1	1	1
15	Thrustscrew	4812050332	1	-	1
		4700186262	-	1	-
16	Hose**	4700183320	0.06m	0.075m	0.06m
17	Terminal*	4700107976	3	3	3
18	Flexible sheathing*	4812050331	1	-	1
		4700186842	-	1	-
19	Thrusting	4812050392	1	-	1
		4700186273	-	1	-
20	Sign plate	4700184482	1	1	1
22	Screw	4700181862	1	1	1
23	Thermo insulating*	4700110164	3	3	3

Parts marked : * are included in maintenance kits.

** the P/N corresponds to 1m length.

ConstructionParts.com

888-634-4289

For pokers UP TO S/N 977029 the tube stator and the rotor have to be replaced together. The previous tube stator cannot be delivered anymore.

VIBRATING ELEMENTS			AX40 42V	AX40 115V	AX40C 42V	AX40E 42V	AX40E 115V	AX40R 42V
Ref.	Description	P/N	Qty	Qty	Qty	Qty	Qty	Qty
1	End cap	4700367300	1	1	1	1	1	-
	Elastomer end cap	4700364520	-	-	-	-	-	1
2	Stator tube	4700117340	1	-	1	1	-	1
		4700117341	-	1	-	-	1	-
3	End piece	4700364526	1	1	-	1	1	1
		4700137621	-	-	1	-	-	-
4	Excenter	4700367304	2	2	2	2	2	2
5	Rotor	4700117322	1	1	1	1	1	1
6	Bearing holder	4700364529	1	1	1	1	1	1
7	Bearing*	4700186841	1	1	1	1	1	1
8	Bearing*	4700181657	1	1	1	1	1	1
9	Ring*	4700181659	1	1	1	1	1	1
11	Screw	4700186054	2	2	2	2	2	2
12	Washer	4700367896	2	2	2	2	2	2
13	O Ring*	4700160321	1	1	1	1	1	1
14	Rubber gasket*	4700186799	1	1	1	1	1	1
15	Thrustscrew	4700186262	1	1	1	1	1	1
16	Hose**	4700183320	0.08m	0.08m	0.075m	0.08m	0.08m	0.08m
17	Terminal*	4700107976	3	3	3	3	3	3
18	Flexible sheathing*	4700186842	1	1	1	1	1	1
19	Thrusting	4700186273	1	1	1	1	1	1
20	Sign plate	4700184482	1	1	1	1	1	1
22	Screw	4700181862	1	1	1	1	1	1
23	Thermo insulating*	4700110164	3	3	3	3	3	3

Parts marked : * are included in maintenance kits.

** the P/N corresponds to 1m length.

For pokers **UP TO S/N 977029** the tube stator and the rotor have to be replaced together. The previous tube stator cannot be delivered anymore.

Ref	Description	P/N	AX48 42V Qty	AX48 115V Qty	AX48AU 42V Qty	AX48C 42V Qty	AX48E 42V Qty	AX48E 115V Qty	AX48R 42V Qty
1	End cap	4700367301	1	1	1	1	1	1	-
	Elastomer end cap	4700364521	-	-	-	-	-	-	1
2	Stator tube	4700137629	1	-	1	1	1	-	1
		4700137630	-	1	-	-	-	1	-
3	End piece	4700137627	1	1	1	-	1	1	1
		4700137633	-	-	-	1	-	-	-
4	Excenter	4700367305	2	2	2	2	2	2	2
5	Rotor	4700364534	1	1	1	1	1	1	1
6	Bearing holder	4700137628	1	1	1	1	1	1	1
7	Bearing*	4700186821	1	1	1	1	1	1	1
8	Bearing*	4700181657	1	1	1	1	1	1	1
9	Ring*	4700181659	1	1	1	1	1	1	1
10	Retaining ring*	4700185949	1	1	1	1	1	1	1
11	Screw	4700500075	2	2	2	2	2	2	2
12	Washer	4700367897	2	2	2	2	2	2	2
13	O Ring*	4700160015	1	1	1	1	1	1	1
14	Rubber gasket*	4700186799	1	1	1	1	1	1	1
15	Thrustscrew	4700186262	1	1	1	1	1	1	1
16	Hose**	4700183321	0.08m	0.08m	0.08m	0.08m	0.08m	0.08m	0.08m
17	Terminal*	4700107976	3	3	3	3	3	3	3
18	Flexible sheathing*	4700186842	1	1	1	1	1	1	1
19	Thrusting	4700186273	1	1	1	1	1	1	1
20	Sign plate	4700184482	1	1	1	1	1	1	1
22	Screw	4700181862	1	1	1	1	1	1	1
23	Thermo insulating*	4700110164	3	3	3	3	3	3	3
24	Shaft	4700187836	-	-	-	1	-	-	-
25	Washer	4700187837	-	-	-	1	-	-	-
26	Shock absorber	4700187838	-	-	-	1	-	-	-
27	Washer	4700187839	-	-	-	1	-	-	-
28	Retaining ring	4700151035	-	-	-	1	-	-	-
29	Slotted nut	4700187840	-	-	-	1	-	-	-

Parts marked : * are included in maintenance kits.

** the P/N corresponds to 1m length.

For pokers **UP TO S/N 977029** the tube stator and the rotor have to be replaced together. The previous tube stator cannot be delivered anymore.

VIBRATING ELEMENT AX56

ConstructionParts.com

888-634-4289

Ref.	Description	P/N	AX56 42V	AX56 115V	AX56C 42V	AX56E 42V	AX56E 115V	AX56R 42V
			Qty	Qty	Qty	Qty	Qty	Qty
1	End cap	4700367302	1	1	1	1	1	-
	Elastomer end cap	4700364522	-	-	-	-	-	1
2	Stator tube	4700364569	1	-	1	1	-	1
		4700364518	-	1	-	-	1	-
3	End piece	4700364538	1	1	-	1	1	1
		4700187684	-	-	1	-	-	-
4	Excenter	4700367306	2	2	-	2	2	2
		4700187736	-	-	2	-	-	-
5	Rotor	4700364540	1	1	1	1	1	1
6	Bearing holder	4700364541	1	1	1	1	1	1
7	Bearing*	4700186810	1	1	1	1	1	1
8	Bearing*	4700182472	1	1	1	1	1	1
9	Ring*	4700182473	1	1	1	1	1	1
10	Retaining ring*	4700183339	1	1	1	1	1	1
11	Screw	4700500015	2	2	2	2	2	2
12	Washer	4700367897	2	2	-	2	2	2
		4700604003	-	-	2	-	-	-
13	O Ring*	4700160015	1	1	1	1	1	1
14	Rubber gasket*	4700186799	1	1	1	1	1	1
15	Thrustscrew	4700186262	1	1	1	1	1	1
16	Hose**	4700183321	0.1m	0.1m	0.1m	0.1m	0.1m	0.1m
17	Terminal*	4700107976	3	3	3	3	3	3
18	Flexible sheathing*	4700186842	1	1	1	1	1	1
19	Thrusting	4700186273	1	1	1	1	1	1
20	Sign plate	4700184482	1	1	1	1	1	1
22	Screw	4700181862	1	1	1	1	1	1
23	Thermo insulating*	4700110164	3	3	3	3	3	3
24	Shaft	4700187681	-	-	1	-	-	-
25	Washer	4700187682	-	-	1	-	-	-
26	Shock absorber	4700187683	-	-	1	-	-	-
27	Washer	4700187685	-	-	1	-	-	-
28	Retaining ring	4700151011	-	-	1	-	-	-
29	Slotted nut	4700187689	-	-	1	-	-	-

Parts marked : * are included in maintenance kits.

** the P/N corresponds to 1m length.

ConstructionParts.com

888-634-4289

ConstructionParts.com

888-634-4289

For pokers **UP TO S/N 977029** the tube stator and the rotor have to be replaced together. The previous tube stator cannot be delivered anymore.

ConstructionParts.com

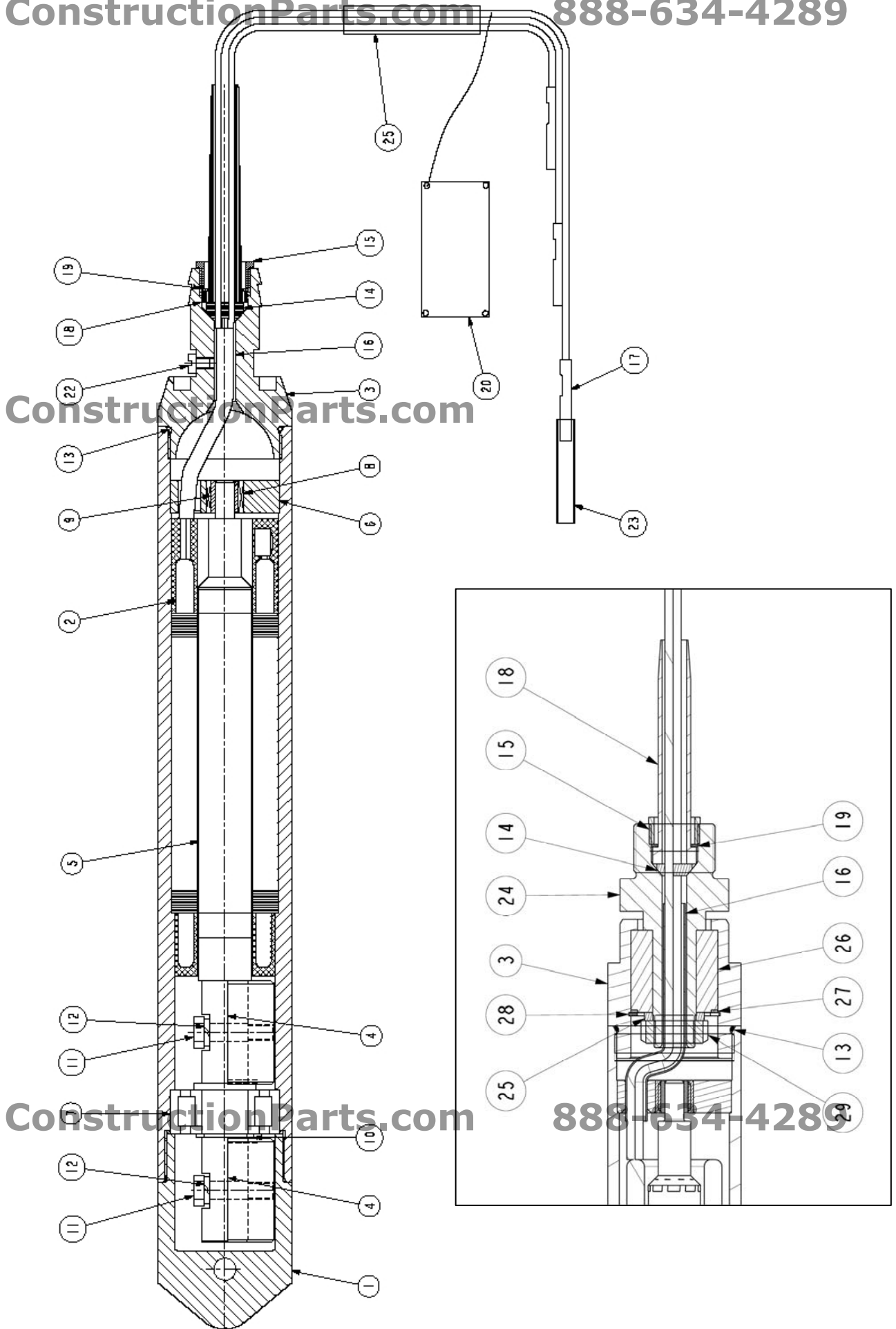
ConstructionParts.com

888-634-4289

Ref.	Description	P/N	AX65 42V Qty	AX65 115V Qty	AX65R 42V Qty
1	End cap	4700367303	1	1	-
	Elastomer end cap	4700187091	-	-	1
2	Stator tube	4700186824	1	-	1
		4700364519	-	1	-
3	End piece	4700186848	1	1	1
4	Excenter	4700367307	2	2	2
5	Rotor	4700186830	1	1	1
6	Bearing holder	4700183295	1	1	1
7	Bearing*	4700186831	1	1	1
8	Bearing*	4700182472	1	1	1
9	Ring*	4700182473	1	1	1
10	Retaining ring*	4700183339	1	1	1
11	Screw	4700500022	2	2	2
12	Washer	4700367898	2	2	2
13	O Ring*	4700160329	1	1	1
14	Rubber gasket*	4700186799	1	1	1
15	Thrustscrew	4700186262	1	1	1
16	Hose**	4700183877	0.09m	0.09m	0.09m
17	Terminal*	4700107976	3	3	3
18	Flexible sheathing*	4700186842	1	1	1
19	Thrusting	4700186273	1	1	1
20	Sign plate	4700184482	1	1	1
22	Screw	4700181862	1	1	1
23	Thermo insulating*	4700110164	3	3	3

Parts marked : * are included in maintenance kits.
 ** the P/N corresponds to 1m length.

For pokers **UP TO S/N 977029** the tube stator and the rotor have to be replaced together. The previous tube stator cannot be delivered anymore.



VIBRATING ELEMENT AX65P

ConstructionParts.com

888-634-4289

Ref.	Description	P/N	Qty
1	End cap	4700367303	1
2	Stator tube	4700186824	1
3	End piece	4700186848	1
4	Excenter	4700367307	2
5	Rotor	4700186830	1
6	Bearing holder	4700183295	1
7	Bearing	4700186831	1
8	Bearing	4700182472	1
9	Ring	4700182473	1
10	Retaining ring	4700183339	1
11	Screw	4700500022	2
12	Washer	4700367898	2
13	O Ring	4700160329	1
14	Cable gland	4700184826	1
15	Hose	4700183877	0.04m
16	Terminal box	4700184697	1
17	Screw	4700533009	3
18	O ring	4700160015	1
19	Terminal	4700960065	3
20	Nut	4700183897	6
21	Washer	4700606001	7
22	Electric cable**	4700901022	15m
23	Terminal	4700960048	3

Parts marked : ** the P/N corresponds to 1m length.

For pokers **UP TO S/N 977029** the tube stator and the rotor have to be replaced together. The previous tube stator cannot be delivered anymore.

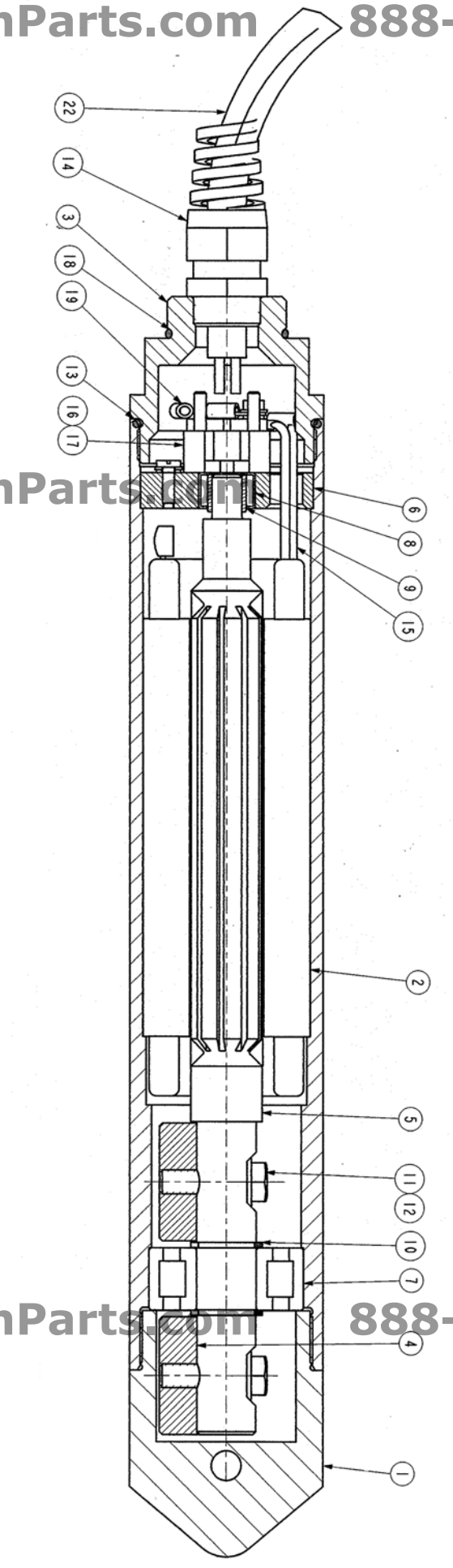
ConstructionParts.com

888-634-4289

ConstructionParts.com

ConstructionParts.com

888-634-4289



OPERATING HOSE AND SWITCH BOX AX36 AND AX40 (FROM S/N 1006670)

Ref.	Description	P/N	AX36 42V Qty	AX36R 42V Qty	AX40 ¹ 42V Qty	AX40 ¹ 115V Qty	AX40R ¹ 42V Qty
2	Clamp*	4700184354	2	2	2	2	2
3	Hose **	4812050366	5m	5m	5m	5m	5m
4	Hose **	D604002087	0.5m	0.5m	0.55m	0.55m	0.55m
5	Connector	4700107976	6	6	6	6	6
6	Thermo-insulation	4700110164	3	3	3	3	3
7	Hose **	D604002087	0.08m	0.08m	0.1m	0.1m	0.1m
8	Terminal	4700110782	3	3	3	3	3
9	Box	4812050234	1	1	-	-	-
		4812050235	-	-	1	1	1
10	Socket button head cap screw*	4812050238	2	2	2	2	2
11	O-ring*	4700W65077	2	2	2	2	2
12	Cover	4812050233	1	1	1	1	1
13	Membrane*	4812050237	1	1	1	1	1
14	Gasket*	4812050236	1	1	1	1	1
15	Switch	4700187170	1	1	1	1	1
16	Clamp	4700186016	4	4	4	4	4
17	Clamp	4700102392	1	1	1	1	1
18	Gland	4812050483	1	1	1	1	1
19	Flexible sheeting	4700107829	1	1	1	1	1
20	Wires **	4700186523	3x5.8m	3x5.8m	3x5.8m	3x5.8m	3x5.8m
21	Electric cable **	4700901021	10m	10m	10m	10m	10m
22	Plug	4700945035	1	1	1	-	1
		4700945030	-	-	-	1	-

Parts marked : * are included in maintenance kits.

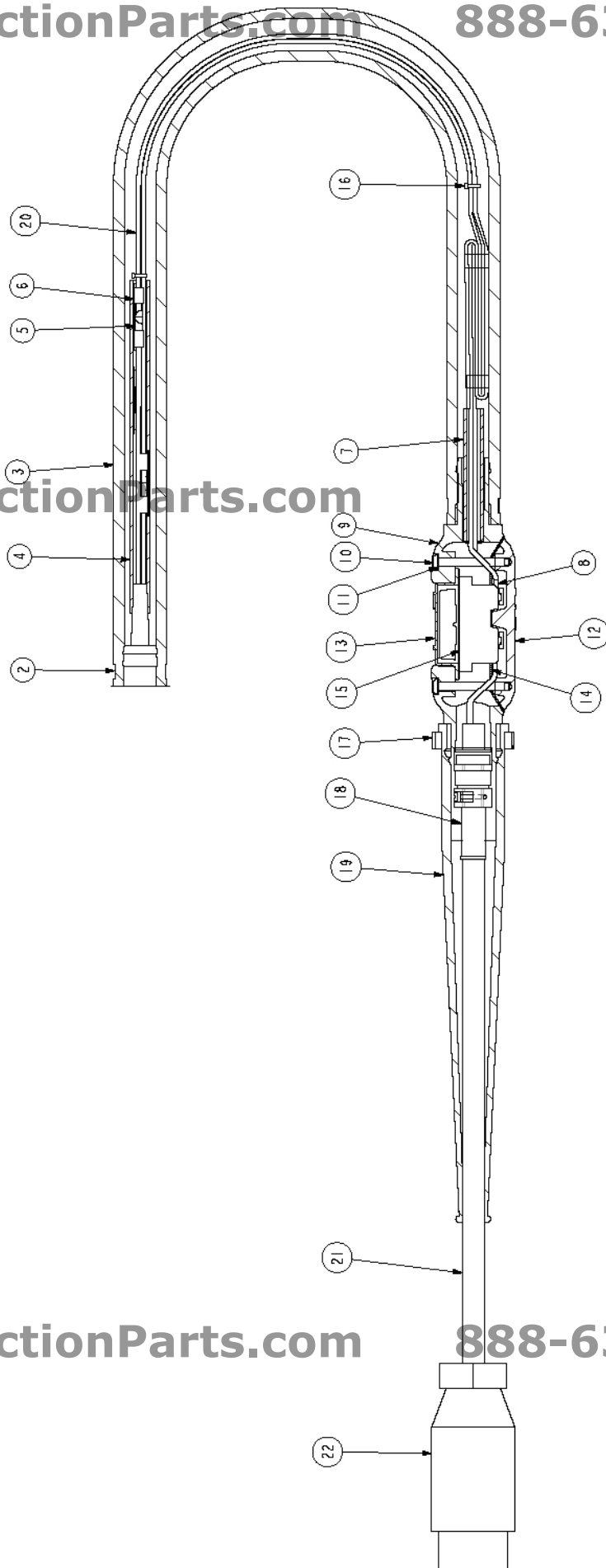
** the P/N corresponds to 1m length.

¹ : For electric pokers AX40 up to 1006670 use the list of AX48

ConstructionParts.com

ConstructionParts.com

888-634-4289



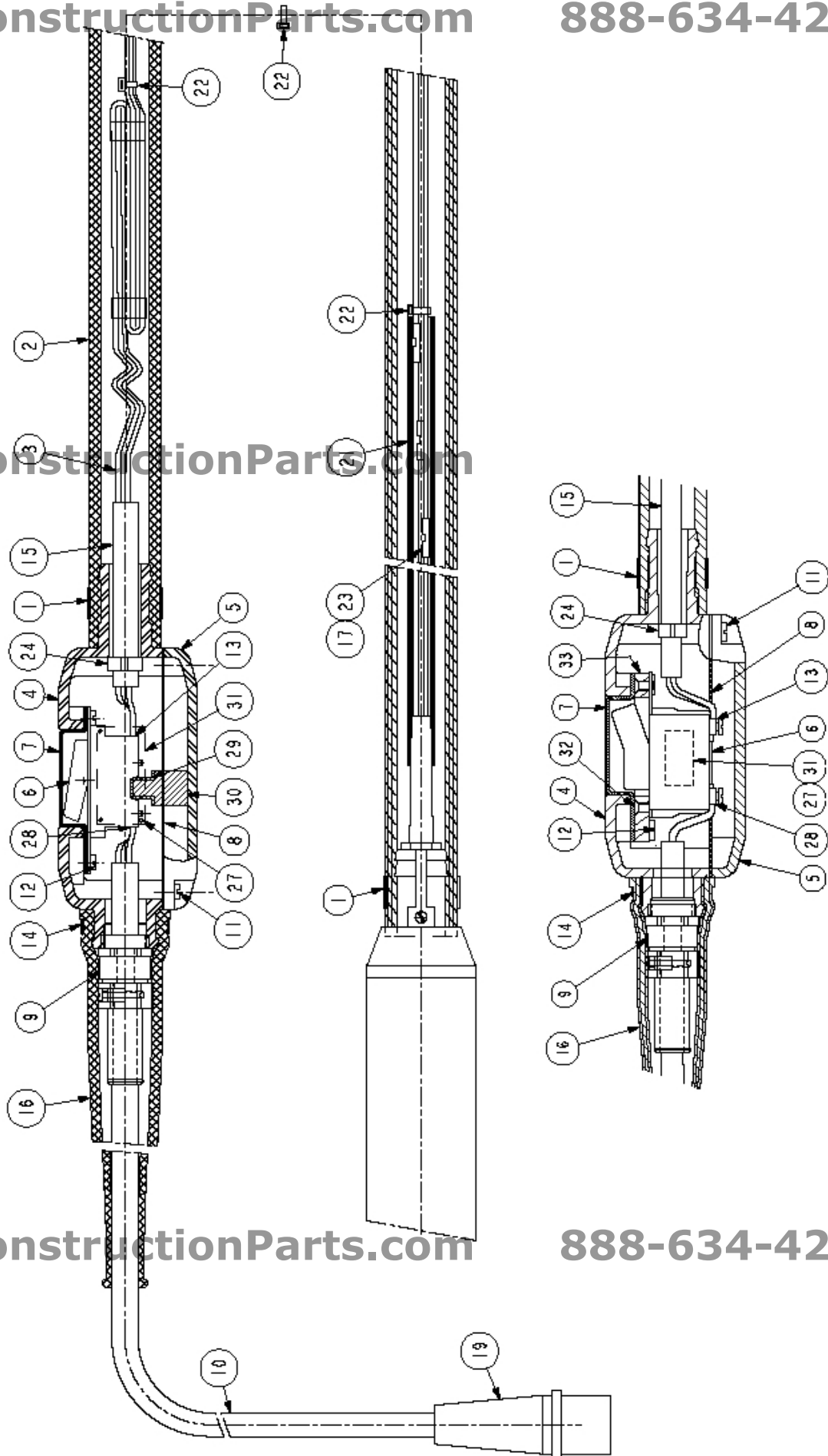
OPERATING HOSE AND SWITCH BOX AX40 (UP TO S/N 1006669), AX48, AX56 AND AX65

Ref	Description	P/N	AX48 ¹ 42V Qty	AX48 ¹ 115V Qty	AX48R ¹ 42V Qty	AX56 42V Qty	AX56 115V Qty	AX56R 42V Qty	AX65 42V Qty	AX65 115V Qty	AX65R 42V Qty
1	Clamp *	4700184354	2	2	2	2	2	2	2	2	2
2	Hose **	4700366152	5m	5m	5m	5m	5m	5m	5m	5m	5m
3	Wires	4700186524	3x5.8m	3x5.8m	3x5.8m	3x5.8m	3x5.8m	3x5.8m	3x5.8m	3x5.8m	3x5.8m
4	Box	4700186686	1	1	1	1	1	1	1	1	1
5	Cover	4700183456	1	1	1	1	1	1	1	1	1
6	Switch	4700183457	1	1	1	1	1	1	-	-	-
		4700930027	-	-	-	-	-	-	1	1	1
7	Membrane *	4700183458	1	1	1	1	1	1	1	1	1
8	Gasket *	4700183459	1	1	1	1	1	1	1	1	1
9	Stuffing box	4812050483	1	1	1	1	1	1	1	1	1
10	Cable **	4700901022	10m	10m	10m	10m	10m	10m	10m	10m	10m
11	Screw *	4700533030	4	4	4	4	4	4	4	4	4
12	Screw *	4700533024	4	4	4	4	4	4	-	-	-
		4700533027	-	-	-	-	-	-	4	4	4
13	Terminal	4700110782	3	3	3	3	3	3	3	3	3
14	Clamp	4700100190	1	1	1	1	1	1	1	1	1
15	Hose **	4700107996	0.1m	0.1m	0.1m	0.1m	0.1m	0.1m	-	-	-
		4700101697	-	-	-	-	-	-	0.1m	0.1m	0.1m
16	Flexible sheathing	4700107829	1	1	1	1	1	1	1	1	1
17	Thermo-insulation	4700110164	3	3	3	3	3	3	3	3	3
19	Plug	4700945035	1	-	1	1	-	1	1	-	1
		4700945030	-	1	-	-	1	-	-	1	-
21	Hose **	4700101697	0.55m	0.55m	0.55m	0.55m	0.55m	0.55m	0.55m	0.55m	0.55m
22	Clamp	4700186016	4	4	4	4	4	4	4	4	4
23	Connector	4700107976	6	6	6	6	6	6	6	6	6
24	Clamp	4700313055	1	1	1	1	1	1	1	1	1
27	Rivet	4700101663	4	4	4	4	4	4	4	4	4
28	End protection	4700110783	3	3	3	3	3	3	3	3	3
29	Plug	4700184840	1	1	1	1	1	1	-	-	-
30	Stop	4700137954	1	1	1	1	1	1	-	-	-
31	Sign plate	4700184482	1	1	1	1	1	1	1	1	1
32	Screw	4700362633	-	-	-	-	-	-	2	2	2
33	Switch holder	4700117348	-	-	-	-	-	-	1	1	1

Parts marked : * are included in maintenance kits.

** the P/N corresponds to 1m length.

¹ : For electric pokers AX40 up to 1006670 use the list of AX48



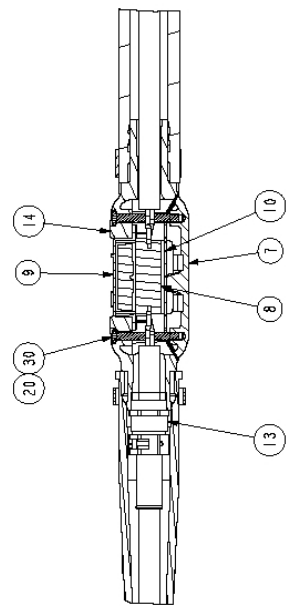
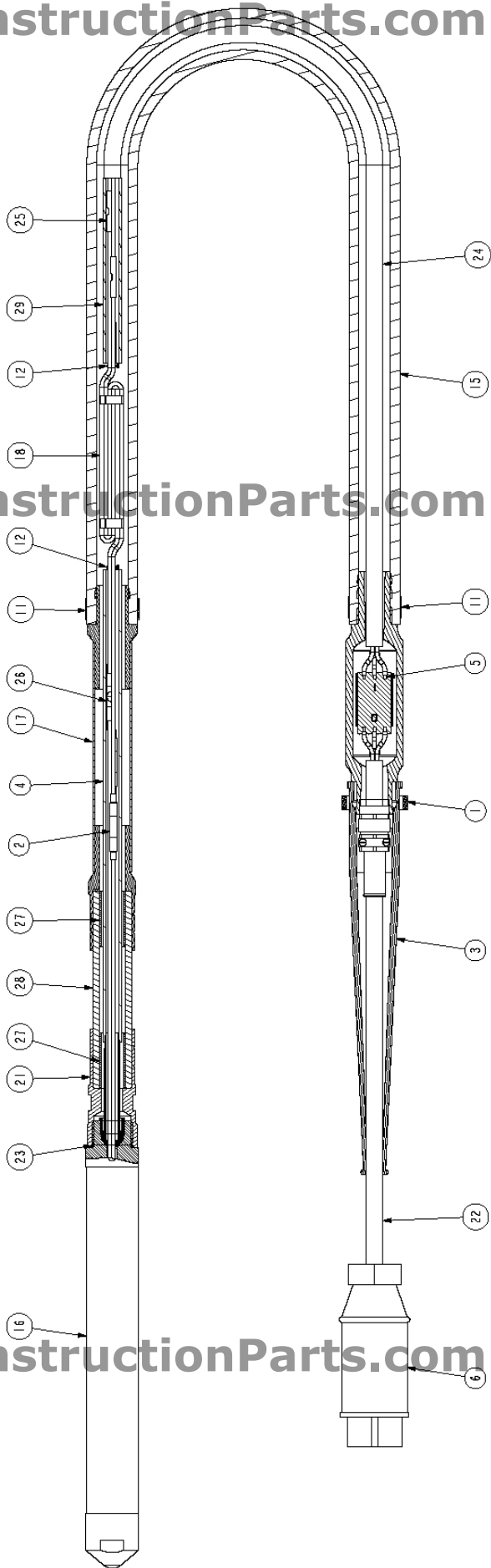
OPERATING HOSE AND SWITCH BOX AX36C AND AX40C 888-634-4289

Ref.	Description	P/N	AX36C-500 Qty	AX36C-1000 Qty	AX40C-500 Qty	AX40C-1000 Qty
1	Clamp	4700102392	1	1	1	1
2	Thermo-insulation	4700110164	3	3	3	3
3	Flexible sheeting	4700107829	1	1	1	1
4	Hose **	4700101697	0.45m	0.95m	0.45m	0.95m
5	Terminal	4700110782	9	9	9	9
6	Plug	4700945035	1	1	1	1
7	Cover	4812050233	1	1	1	1
8	Switch	4700187170	1	1	1	1
9	Membrane*	4812050237	1	1	1	1
10	Gasket*	4812050236	1	1	1	1
11	Clamp*	4700184354	2	2	2	2
12	Clamp	4700186016	2	2	2	2
13	Gland	4812050483	1	1	1	1
14	Box	4812050235	1	1	1	1
15	Hose **	4700366152	5m	5m	5m	5m
17	Steel hose	4700137760	1	-	1	-
		4700137178	-	1	-	1
18	Wires **	4700186524	3x1m	3x1m	3x1m	3x1m
20	Socket button head cap screw*	4812050238	2	2	2	2
21	End piece	4700137175	1	1	1	1
22	Electric cable **	4700901021	10m	10m	10m	10m
23	O-ring	4700160136	1	1	1	1
24	Electric cable **	4700901021	4.8m	4.8m	4.8m	4.8m
25	Terminal	4700182721	3	3	3	3
26	Connector	4700107976	6	6	6	6
27	Bushing	4700184724	2	2	2	2
28	Shock absorber	4700184420	1	1	1	1
29	Hose **	4700101697	0.25m	0.25m	0.25m	0.25m
30	O-ring*	4700W65077	2	2	2	2

Parts marked : * are included in maintenance kits.
 ** the P/N corresponds to 1m length.

ConstructionParts.com

ConstructionParts.com



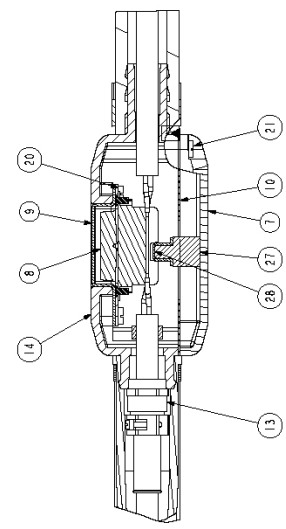
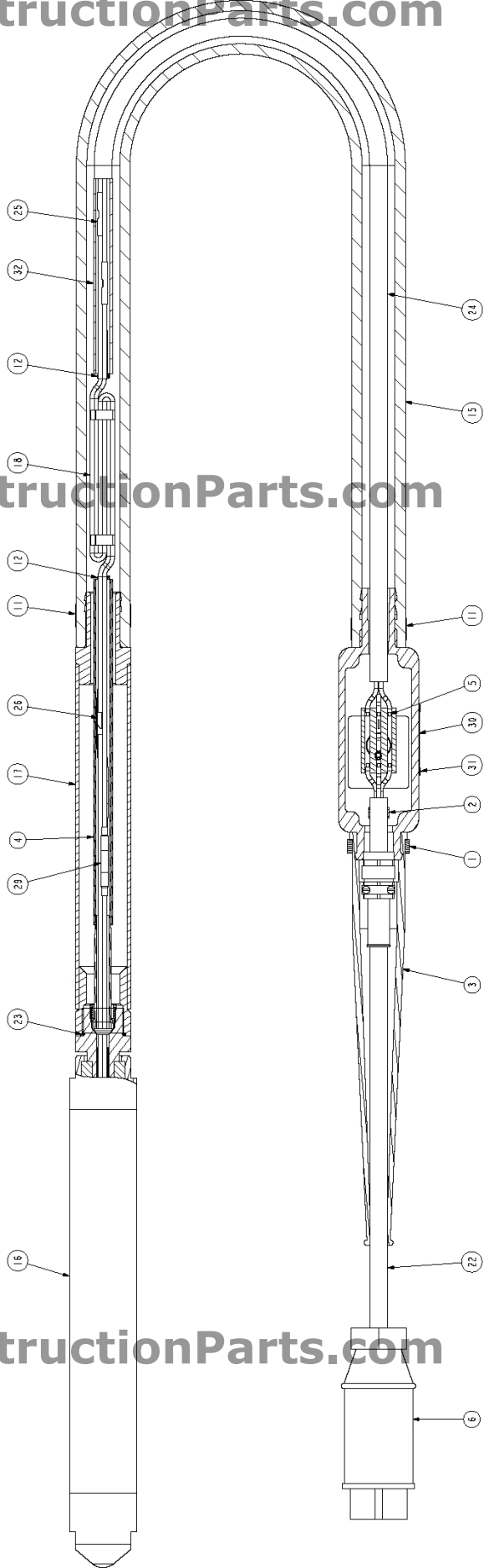
OPERATING HOSE AND SWITCH BOX AX486C AND AX56C 888-634-4289

OPERATING HOSE C			AX48C-500	AX48C-1000	AX56C-500	AX56C-1000
Ref.	Description	P/N	Qty	Qty	Qty	Qty
1	Clamp	4700100190	1	1	1	1
2	Clamp	4700105566	1	1	1	1
3	Flexible sheeting	4700107829	1	1	1	1
4	Hose **	4700101697	0.53m	1.03m	0.53m	1.03m
5	Terminal	4700110783	9	9	9	9
6	Plug	4700945035	1	1	1	1
7	Cover	4700183456	1	1	1	1
8	Switch	4700183457	1	1	1	1
9	Membrane*	4700183458	1	1	1	1
10	Gasket*	4700183459	1	1	1	1
11	Clamp*	4700184354	2	2	2	2
12	Clamp	4700186016	2	2	2	2
13	Gland	4812050483	1	1	1	1
14	Box	4700186686	1	1	1	1
15	Hose **	4700366152	5m	5m	5m	5m
17	Steel hose	4700137712	1	-	1	-
		4700137738	-	1	-	1
18	Wires **	4700186524	3x1m	3x1m	3x1m	3x1m
20	Screw*	4700533024	4	4	4	4
21	Screw*	4700533030	4	4	4	4
22	Electric cable **	4700901022	10m	10m	10m	10m
23	O-ring	4700160136	1	1	1	1
24	Electric cable **	4700901022	4.8m	4.8m	4.8m	4.8m
25	Terminal	4700182722	3	3	3	3
26	Connector	4700107976	6	6	6	6
27	Stop	4700137954	1	1	1	1
28	Plug	4700184840	1	1	1	1
29	Thermo-insulation	4700110164	3	3	3	3
30	Sign plate	4700184482	1	1	1	1
31	Rivet	4700101663	4	4	4	4
32	Hose **	4700101697	0.25m	0.25m	0.25m	0.25m

Parts marked : * are included in maintenance kits.
 ** the P/N corresponds to 1m length.

ConstructionParts.com

ConstructionParts.com



888-634-4289

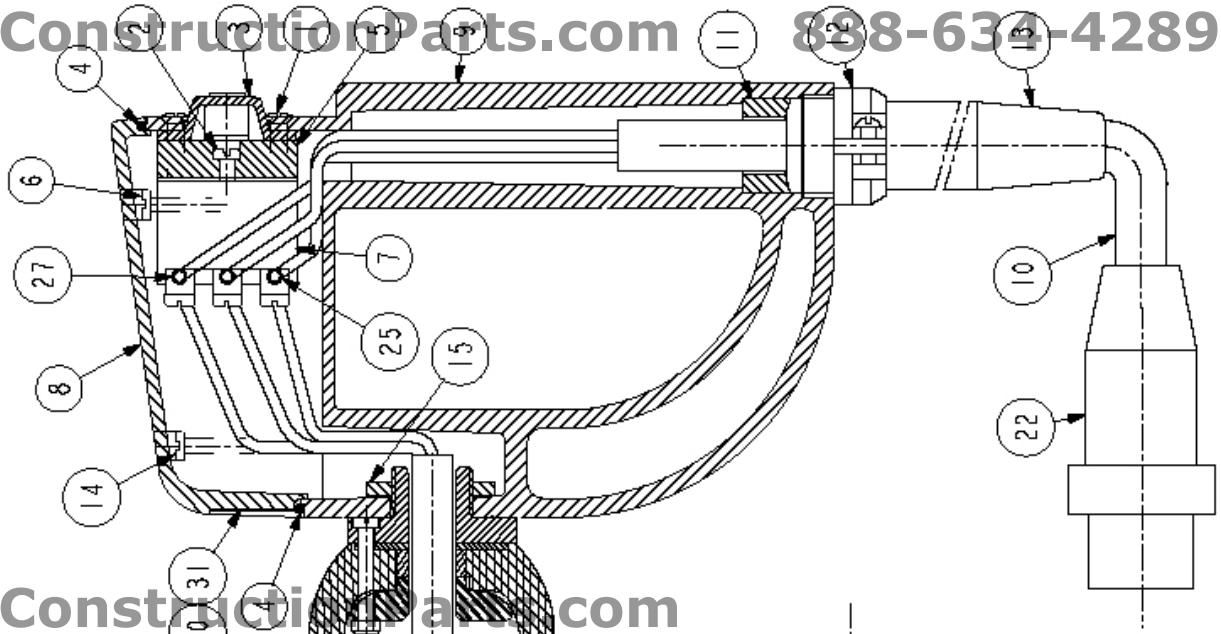
OPERATING HOSE AND SWITCH BOX AX40E, AX48E AND AX56E

Ref.	Description	P/N	AX40E 42V	AX40E 115V	AX48E 42V	AX48E 115V	AX56E 42V	AX56E 115V
			Qty	Qty	Qty	Qty	Qty	Qty
1	Screw	4700541539	4	4	4	4	4	4
2	Screw	4700533007	2	2	2	2	2	2
3	Rubber membrane	4700701840	1	1	1	1	1	1
4	O ring	4700160231	1	1	1	1	1	1
5	Clamp plate	4700701842	1	1	1	1	1	1
6	Screw	4700541540	2	2	2	2	2	2
7	Switch	4700930027	1	1	1	1	1	1
8	Cover	4700701844	1	1	1	1	1	1
9	Handle	4700363650	1	1	1	1	1	1
10	Cable **	4700901022	15m	15m	15m	15m	15m	15m
11	Cable casing	4700701846	1	1	1	1	1	1
12	Gland	4700366128	1	1	1	1	1	1
13	Flexible sheathing	4700366129	1	1	1	1	1	1
14	Screw	4700541541	2	2	2	2	2	2
15	Plate	4700363649	1	1	1	1	1	1
17	Shock absorber	4700363284	1	1	1	1	1	1
18	Clamp	4700184354	2	2	2	2	2	2
19	Hose **	4700366152	0,47m	0,47m	0,47m	0,47m	0,47m	0,47m
20	Hose **	4700107996	0,47m	0,47m	0,47m	0,47m	0,47m	0,47m
21	Hose **	4700107996	0,26m	0,26m	0,26m	0,26m	0,26m	0,26m
22	Plug	4700945035	1	1	1	1	1	1
23	Connector	4700107976	6	6	6	6	6	6
24	Thermo-insulation	4700110164	3	3	3	3	3	3
25	End protection	4700110783	6	6	6	6	6	6
26	Cable **	4700186524	3x0.3m	3x0.3m	3x0.3m	3x0.3m	3x0.3m	3x0.3m
27	Tip	4700180124	3	3	3	3	3	3
30	Rivet	4700101663	4	4	4	4	4	4
31	Sign plate	4700184482	1	1	1	1	1	1

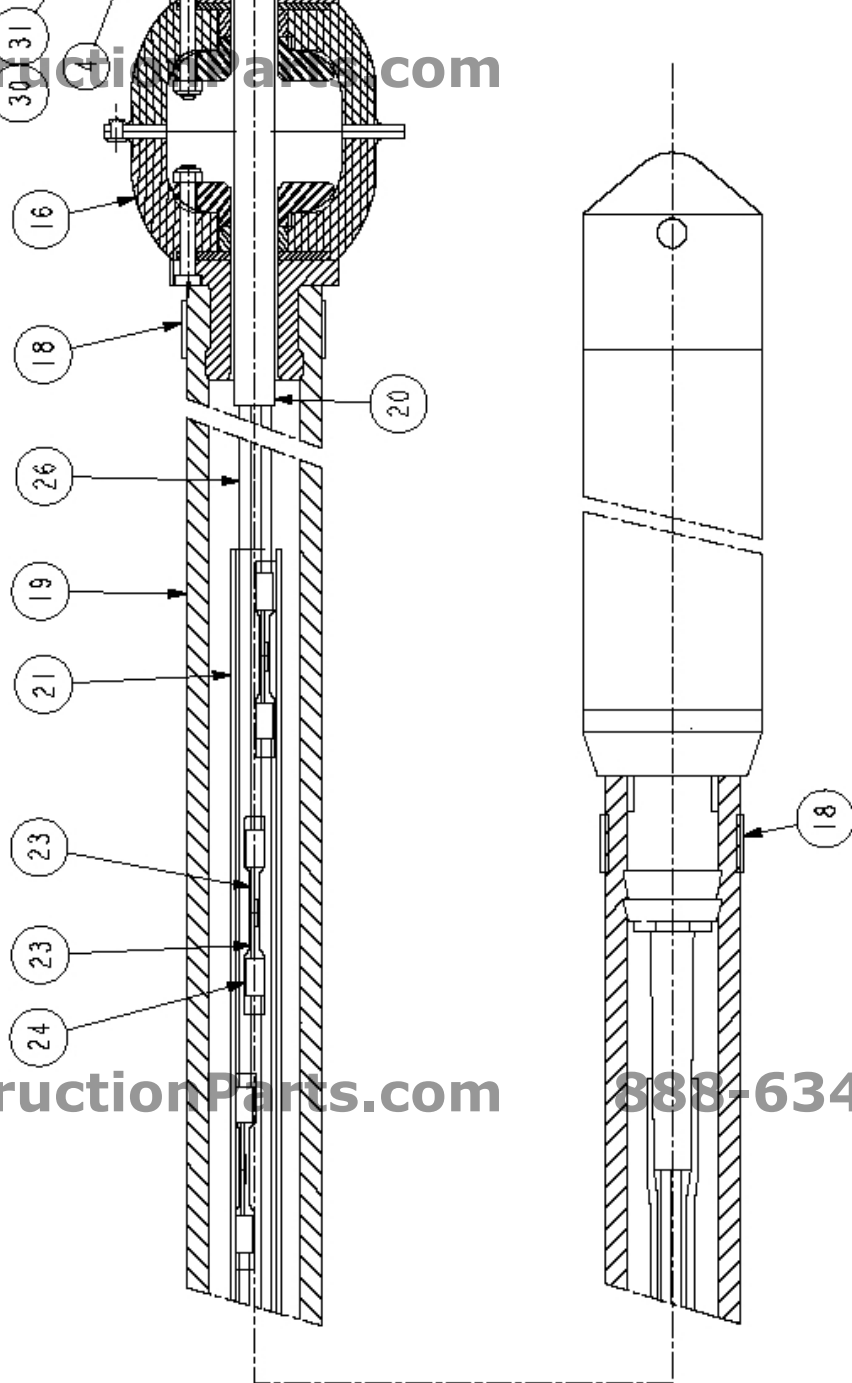
Parts marked : * are included in maintenance kits.
 ** the P/N corresponds to 1m length.

888-634-4289

ConstructionParts.com 888-634-4289



ConstructionParts.com

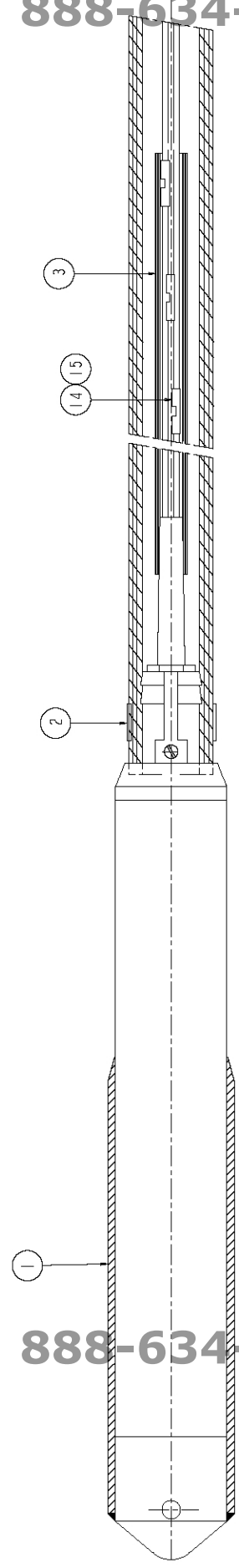
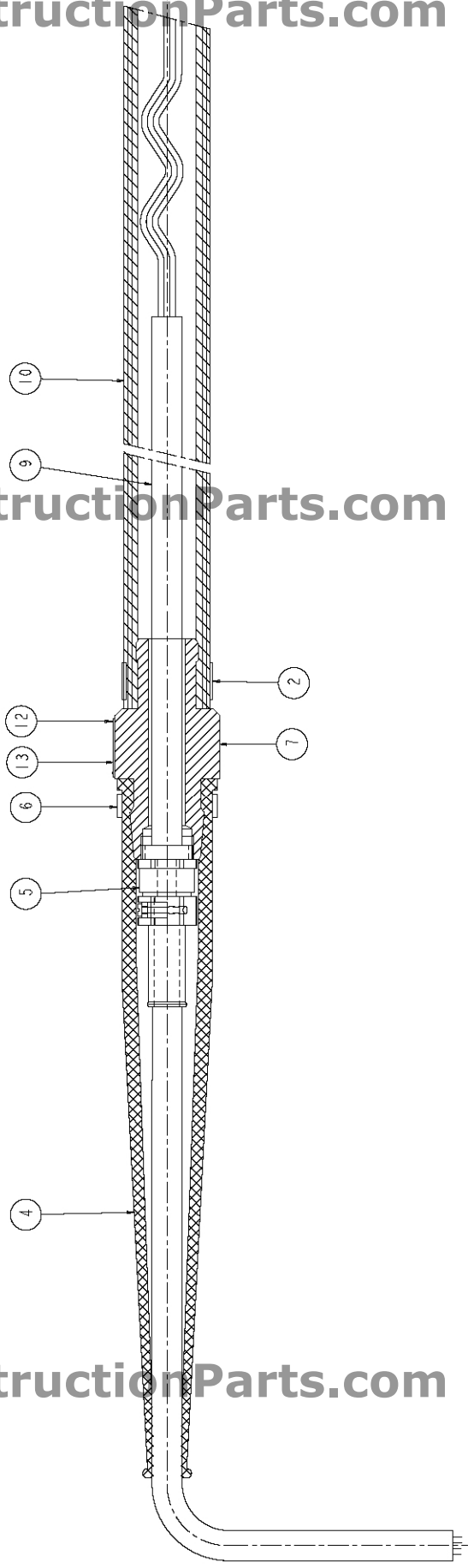


ConstructionParts.com

888-634-4289

OPERATING HOSE AU			AX48AU 42V
Ref.	Description	P/N	Qty
1	Reenforcing tube	4700187413	1
2	Clamp	4700184354	2
3	Hose**	4700101697	0.55m
4	Flexible sheeting	4700107829	1
5	Stuffing box	D6040001063	1
6	Clamp	4700100190	1
7	Hose holder	4700186737	1
9	Electric cable**	4700901022	3.5m
10	Hose**	4700366152	1.3m
12	Rivet	4700101663	4
13	Sign plate	4700184482	1
14	Connector	4700107976	6
15	Thermo-insulation	4700110164	3

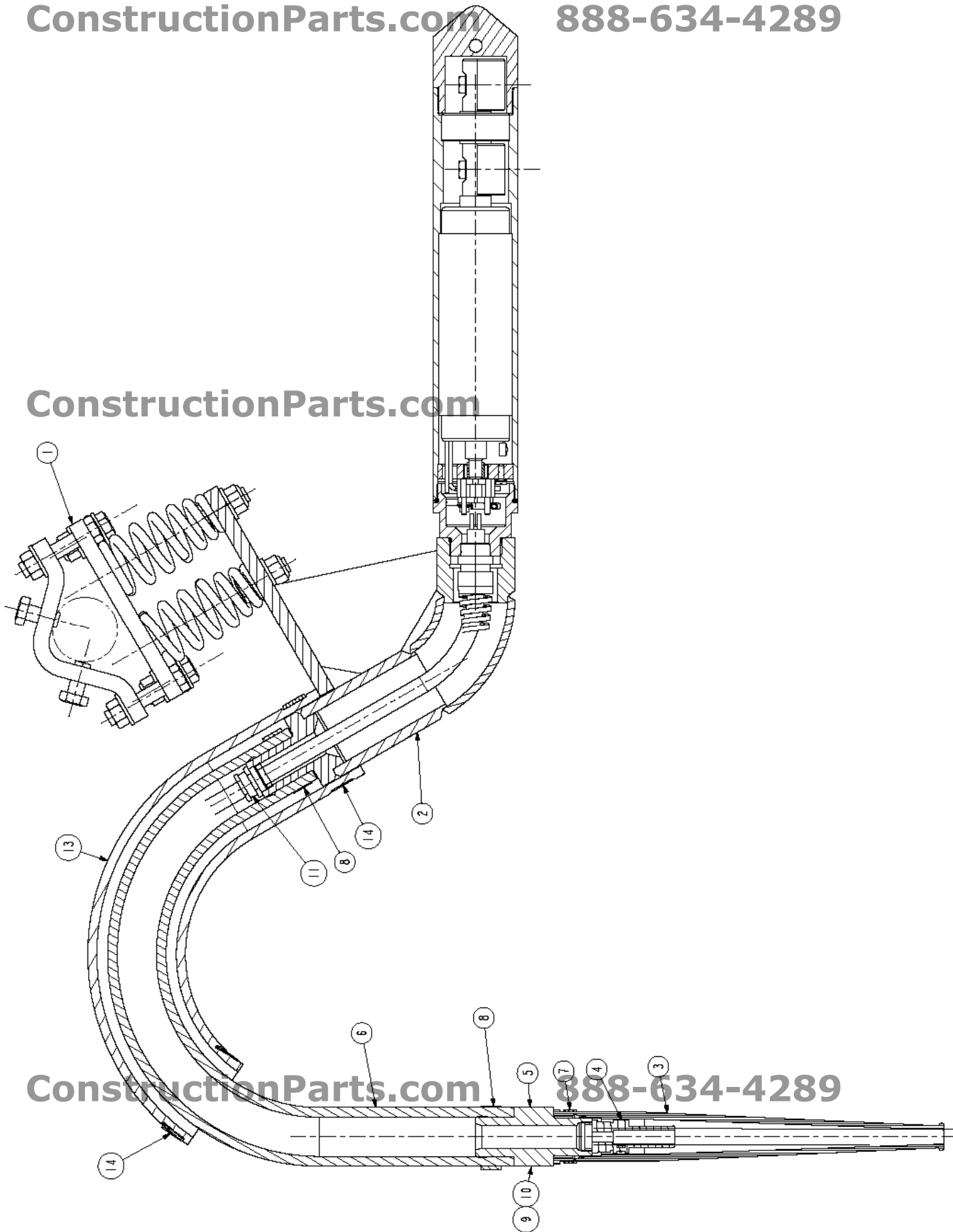
Parts marked : ** the P/N corresponds to 1m length.



OPERATING HOSE WITHOUT SWITCH BOX AX65P**888-634-4289**

OPERATING HOSE P			AX65P 42V
Ref.	Description	P/N	Qty
1	Spring absorber cpl	4700186203	1
2	Holder	4700184688	1
3	Flexible sheeting	4700107829	1
4	Stuffing box	4812050483	1
5	Hose holder	4700107896	1
6	Hose**	4700102781	1m
7	Clamp	4700100190	1
8	Clamp	4700184353	2
9	Sign plate	4700184482	1
10	Rivet	4700101663	4
11	Stuffing box	4700100426	1
13	Hose**	4700186042	0.5m
14	Clamp	4700105905	1

Parts marked : ** the P/N corresponds to 1m length.



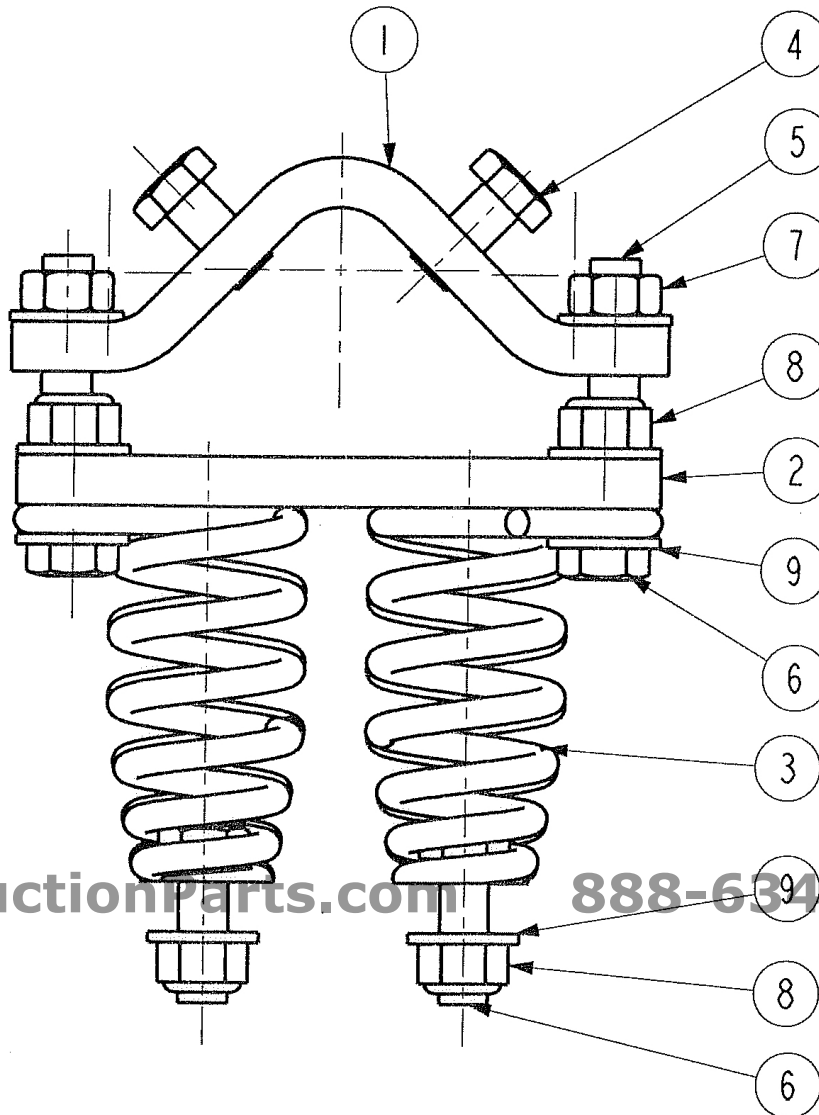
SPRING ABSORBER AX65P

ConstructionParts.com

888-634-4289

			AX65P 42V
Ref.	Description	P/N	Qty
1	Flange	4700185754	1
2	Plate	4700185753	1
3	Spring	4700185755	4
4	Screw	4700500051	2
5	Screw	4700500049	2
6	Screw	4700500049	8
7	Nut	4700570007	2
8	Nut	4700586019	8
9	Washer	4700600009	12

ConstructionParts.com



ConstructionParts.com

888-634-4289