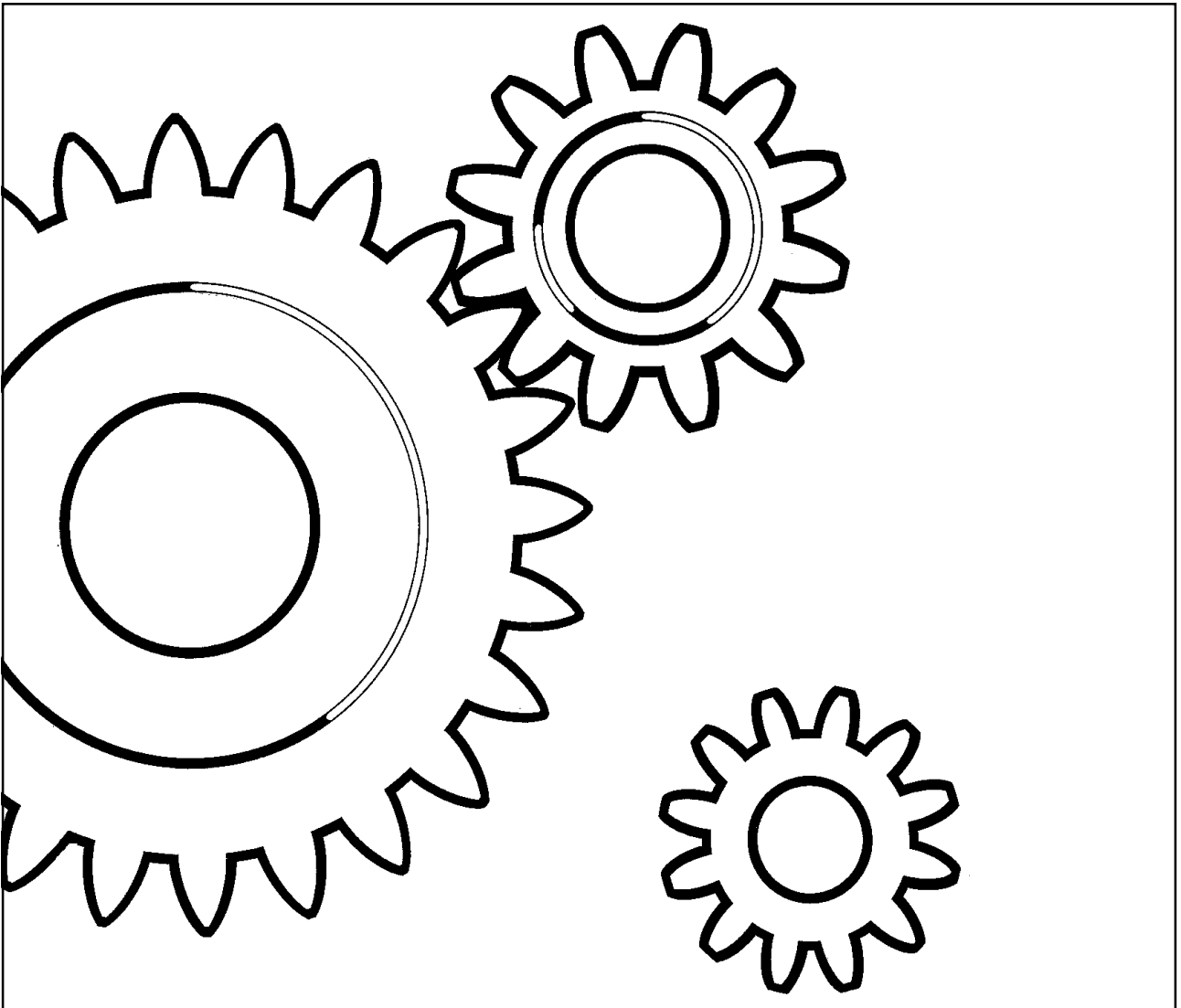


**DYNAPAC**  
**LF15**  
**SPARE PARTS**  
**CATALOGUE**  
SLF015-3EN1



***DYNAPAC***  
Metso Dynapac AB

Box 504, SE-371 23 Karlskrona, Sweden  
Phone: +46 455 30 60 00, Fax: +46 455 30 60 30  
[www.dynapac.com](http://www.dynapac.com)

## **Forward Vibratory Plate Compactor LF15**

### **Spare Parts Catalogue SLF015-3EN1**

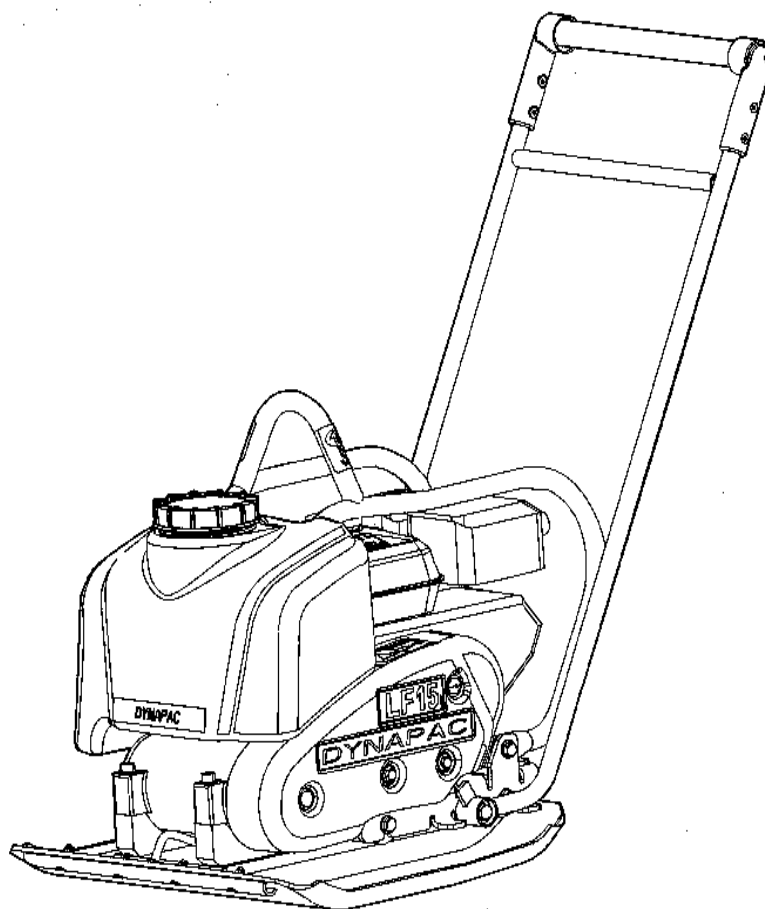
*Valid from plate serial number:  
\*21506098-21506097 , 21506253-21506272\*  
\*215060309-\**

*Engines:*

*Honda GX120*

*Published catalogue issues valid for these plate compactors*

<i>Catalogue</i>	<i>Issue date</i>	
<i>SLF015-3EN0</i>	<i>2003 - 12</i>	<i>Replaced by SLF015-1EN1</i>
<i>SLF015-3EN1</i>	<i>2004 - 04</i>	



**RESERVDLSBESTÄLLNING**

Följande uppgifter ska lämnas vid beställning av reservdelar för att undvika leveransfel:

1. Maskintyp.
2. Vältensserienummer.
3. Antal av önskad reservdel.
4. Reserdelens artikelnummer.
5. Reservdelens benämning.
6. Måttuppgifter vid beställning av metervara.

**ERSATZTEILBESTELLUNG**

Zur Vermeidung von Fehllieferungen sind bei der Bestellung von Ersatzteilen folgende Angaben zu machen:

1. Maschinentyp.
2. Herstellungsnummer.
3. Bestellmenge. (Quantity)
4. Ersatzteilnummer. (Part N<sup>o</sup>)
5. Ersatzteilbenennung. (Denomination)
6. Massangaben bei Bestellung von Meterware.

**PEDIDO DE RECAMBIOS**

Para evitar errores en las entregas, deberán indicarse los siguientes datos al hacer un pedido de recambios:

1. Tipo de máquina.
2. Número de serie.
3. Cantidad de piezas deseadas. (Quantity)
4. Número de artículo de la pieza de recambio. (Part N<sup>o</sup>)
5. Denominación de la pieza. (Denomination)
6. Indíquese la medida al solicitar un artículo que se expide por metros.

**ORDERING SPARE PARTS**

To avoid errors in delivery, please give the following information when ordering spare parts:

1. Type of machine.
2. Roller serial number.
3. Quantity required.
4. Part number.
5. Parts denomination.
6. Dimensions when ordering per length.

**ORDINI DI RICAMBI**

Per evitare errori nelle consegne di ricambi, Vi preghiamo di comunicarci le seguenti informazioni al momento dell'ordinazione:

1. Tipo di macchina.
2. Numero di serie della macchina.
3. Quantità dei pezzi desiderati. (Quantity)
4. Numero di codice del pezzo. (Part N<sup>o</sup>)
5. Descrizione del pezzo di ricambio. (Denomination)
6. Misura, in caso di ordine per metro.

**COMMANDE DE PIÈCES DE RECHANGE**

Les indications suivantes doivent être fournies lors de la commande de pièces de rechange, afin d'éviter toute erreur de livraison:

1. Type de machine.
2. Numéro de série.
3. Quantité désirée de pièce de rechange. (Quantity)
4. Numéro de la pièce de rechange. (Part N<sup>o</sup>)
5. Dénomination de la pièce de rechange. (Denomination)
6. Longueur en cas de commande au mètre.

**YOUR AGENT/DEALER:**

# DYNAPAC

## Text pages

The text pages is structured as the picture on the right.

1. This is the remarks for specific items and the descriptions of the remarks is at the bottom of the parts list.

2. Parts indicated by a dot and moved to the right are included when buying the assembled unit above.

3. Spare parts and service code for a specific part, mainly for internal use at Dynapac. "A" = Service part, "B" = Fast moving part, "C" = Suggested exchanged part and "D" = Regular spare part.

DYNAPAC				Metso Dynapac AB	
Cooling system					
Ref. No.	Part No.	Rem.	Qty	Description	Code
1	223047		1	Water cooler	③ C
2	935852		1	Radiator cap	D
3	935851	①	1	Cock	
4	373263	A	1	Radiator hose	D
5	313009		6	Clamp	
6	205058	B	1XL	Rubber clutch	
7	373261	C	1	Radiator hose	D
8			1	Oil cooler	D
9	223289		1	Plate	
10	902166	D	1XL	Edge trim	
11	223287	E	1	Holder	
12	223288	F	1	Holder	
13	908168		1	Fan guard	
14	908170		1	Fan shroud	
15	908171		2	Mounting bar	
16	908169		1	Fan guard	
17	500021		14	Screw	
18	902286		14	Nut	
19	600006		14	Washer	
20	313102		2	Cable strap	

A) Upper  
 B) L=060MM  
 C) Lower  
 D) L=2280MM  
 E) Left  
 F) Right

## Changes

PARTS INFO	SERVICE INFO	GROUP	PAGE	NOTES

## Notes

---

---

---

---

---

---

---

---

---

---

## PÄRMETIKETT

För att undvika fel vid reservdelsbeställning finns här nedan två etiketter som passar i fickorna på pärmarnas ryggar. På dessa kan man se från vilket vältnummer av aktuell maskin reservdelskatalogen gäller. Gör så här:

1. Tag denna sida ur pärmen.
2. Klipp ut etiketten till **VÄNSTER** (1) och sätt in den i fickan på **DENNA** pärmens rygg.
3. Finns det en etikett till **HÖGER** (2), kan denna användas på pärmen för **FÖREGÅENDE** utgåva av denna katalog.
4. Kasta detta papper.

## KATALOG-BESCHRIFTUNG

Zur Vermeidung von Fehlern bei der Ersatzteilbestellung benutzen Sie bitte die unteren Beschriftungen, um die Kataloge auf der Rückseite zu kennzeichnen. Auf der Beschriftung ist angegeben, für welche Maschinennummern der jeweilige Katalog gültig ist. Ablauf:

1. Nehmen Sie dieses Blatt aus dem Katalog.
2. Schneiden Sie die **LINKE** Beschriftung (1) aus. Schieben Sie die Beschriftung in die tasche auf **DEM** Katalogrücke.
3. Sollte die Beschriftung unten **RECHTS** (2) mitgeliefert werden, kennzeichnen Sie damit bitte die **ÄLTERE** Ausführung dieses Kataloges.
4. Den Rest dieses Blattes bitte vernichten.

## ETIQUETA PARA LA CARPETA

Para evitar errores al pedir repuestos utilicen las etiquetas abajo descritas para identificar los catálogos en la parte trasera de la carpeta. En la etiqueta se ven los números de referencia de la serie para la cual es válido el catálogo. Instrucciones:

1. Quitar esta página de la carpeta.
2. Corta la etiqueta **IZQUIERDA** (1) y ponerla en **ESTA** carpeta en la parte trasera.
3. Si hay una etiqueta en la parte **DERECHA** (2) se puede utilizar en la carpeta para el catálogo que **PRECEDE** a esta.
4. Tirar esta hoja.

## BINDER LABEL

To avoid errors when ordering spare parts use the labels below to identify the catalogues on the back of the binder. The label contain the serial number range for which the catalogue is valid. Do like this:

1. Remove this page from the binder.
2. Cut out the **LEFT** label (1) and put it on **THIS** binders back.
3. If there is a label to the **RIGHT** (2), it can be used on the binder for **PRECEDING** issue of this catalogue.
4. Throw away this paper.

## ETICHETTAPOSTA SUL RACCOGLITORE

Per evitare errori quando ordinate pezzi di ricambio, usate le etichette in calce che servono ad identificare i cataloghi sul retro del raccoglitore. L'etichetta indica il numero di matricola delle macchine prese in considerazione nel catalogo.

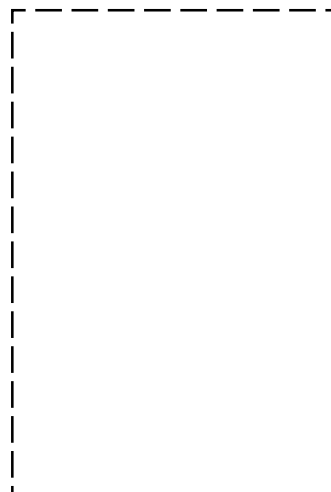
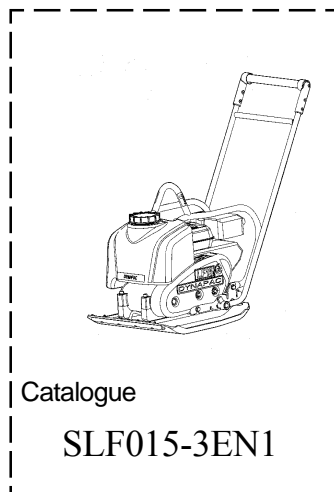
1. Rimuovete questa pagina dal raccoglitore.
2. Ritagliate l'etichetta posta a **SINISTRA** (1) e ponetela sul retro **DEL** raccoglitore.
3. Se trovate anche un'etichetta sulla **DESTRA** (2), ritagliatela e ponetela sul raccoglitore relativo alla **PRECEDENTE** edizione del catalogo.
4. Distruggete questo foglio.

## ETIQUETAGE DU CATALOGUE

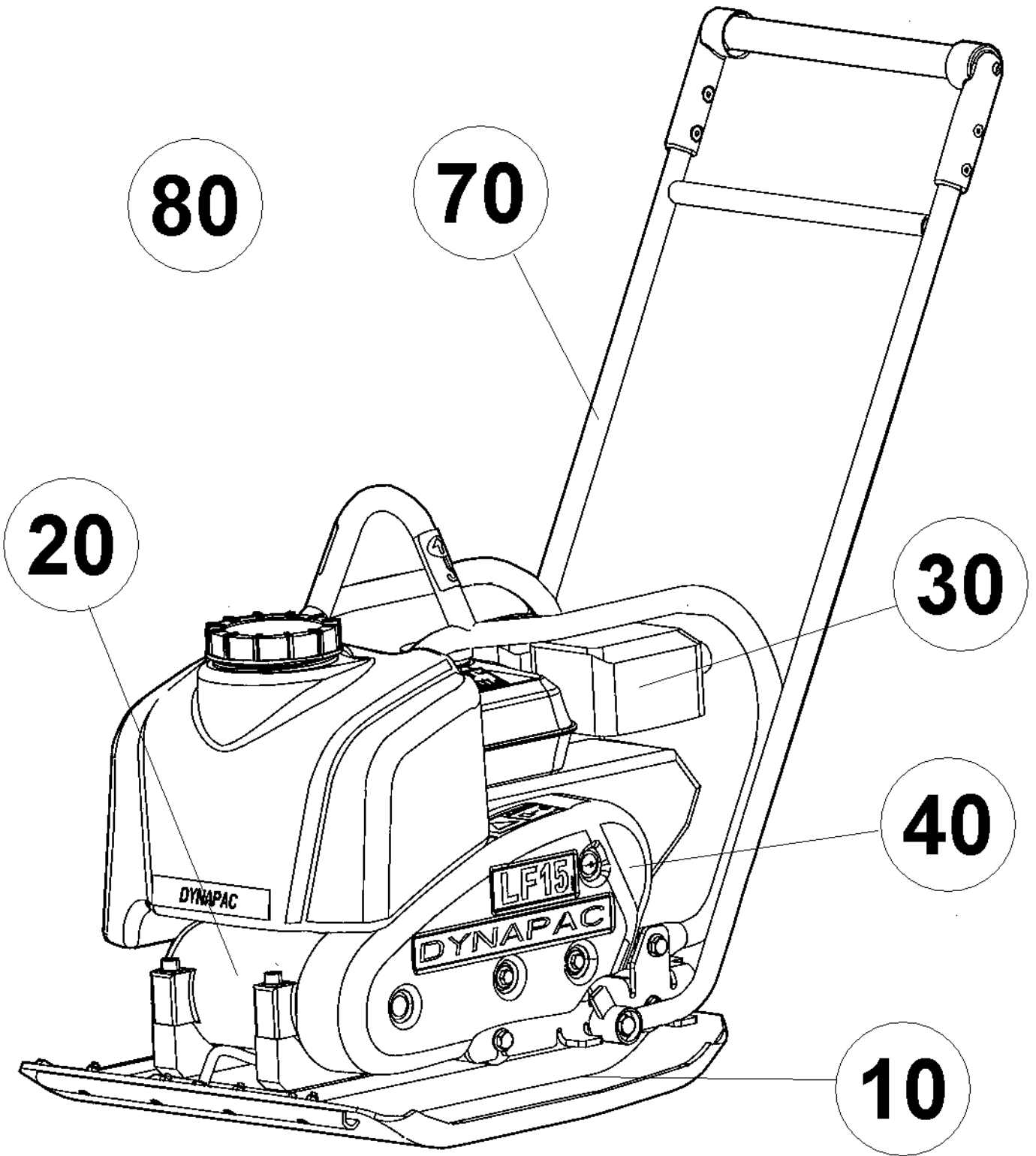
Afin d'éviter des erreurs lors de commandes de pièces de rechange, nous vous conseillons d'apposer les marquages ci-dessous à l'arrière du classeur, pour identifier les catalogues. Ce marquage indique les numéros de série pour lesquels le catalogue est adapté. Il convient de procéder de la façon suivante:

1. Retirez cette page du classeur.
2. Découpez l'étiquette de **GAUCHE** (1), et apposez-la à l'arrière de **CE** catalogue.
3. Si il y a une étiquette à **DROITE** (2), vous pourrez l'apposer sur le classeur de l'edition **PRECEDENTE** du catalogue.
4. Détruire cette feuille.

1.



<b>LF15 SN 21506098-107, 253-272, 309-</b> .....	<b>2</b>
<b>Ground plate, frame and sprinkling system</b> .....	<b>4</b>
Ground plate, engine plate and frame .....	6
Sprinkling system .....	8
Option, transport device .....	10
<b>Eccentric element</b> .....	<b>12</b>
Eccentric element .....	14
<b>Engine and engine installation</b> .....	<b>16</b>
Engine Honda GX 120 .....	18
Engine installation .....	20
<b>Power transmission</b> .....	<b>22</b>
Power transmission .....	24
<b>Handle</b> .....	<b>26</b>
Handle .....	28
<b>Decals and documentation</b> .....	<b>30</b>
Decals and documentation .....	32

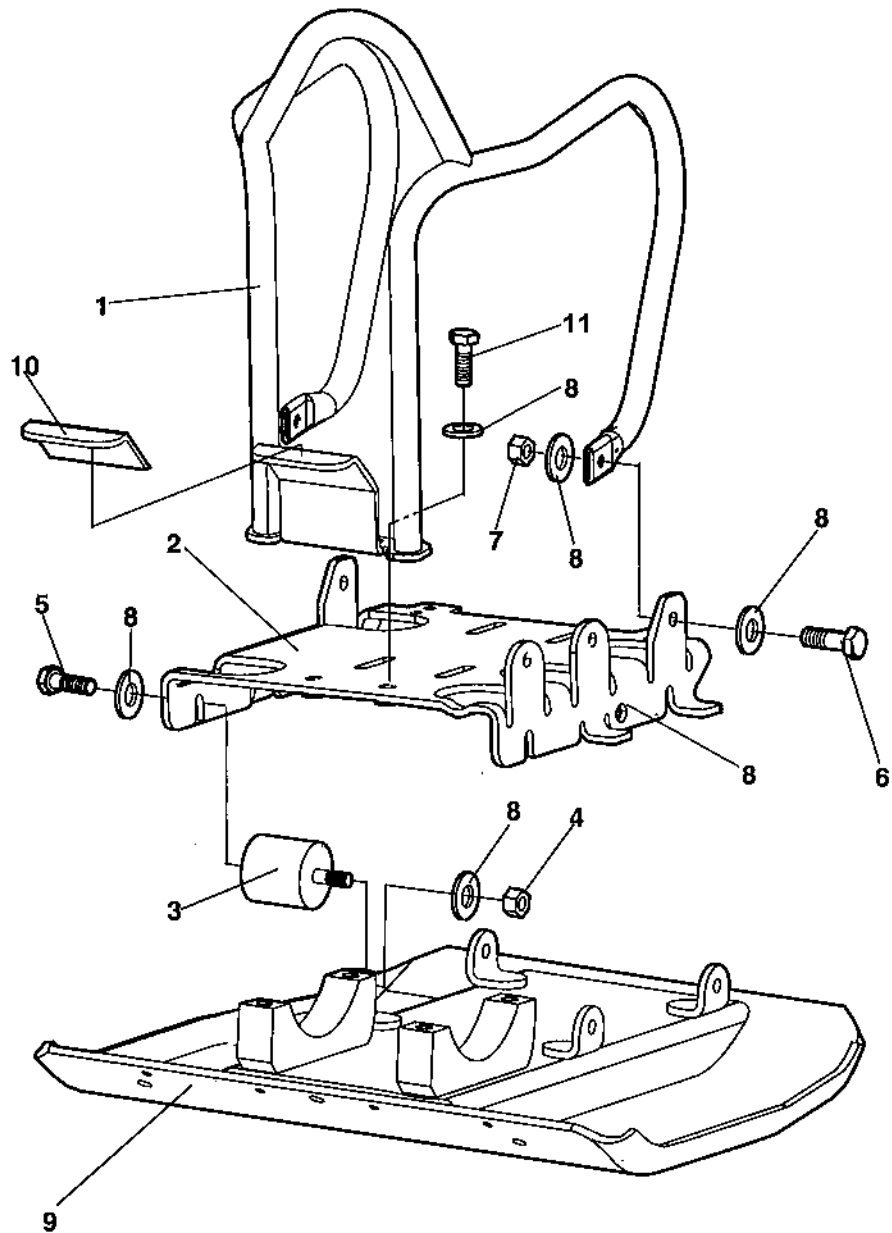


Ref. No.	Part No.	Rem.	Qty	Description	Code
10				Ground plate, frame and sprinkling system ( Page 4 )	
20				Eccentric element ( Page 12 )	
30				Engine and engine installation ( Page 16 )	
40				Power transmission ( Page 22 )	
70				Handle ( Page 26 )	
80				Deacis and documentation ( Page 30 )	



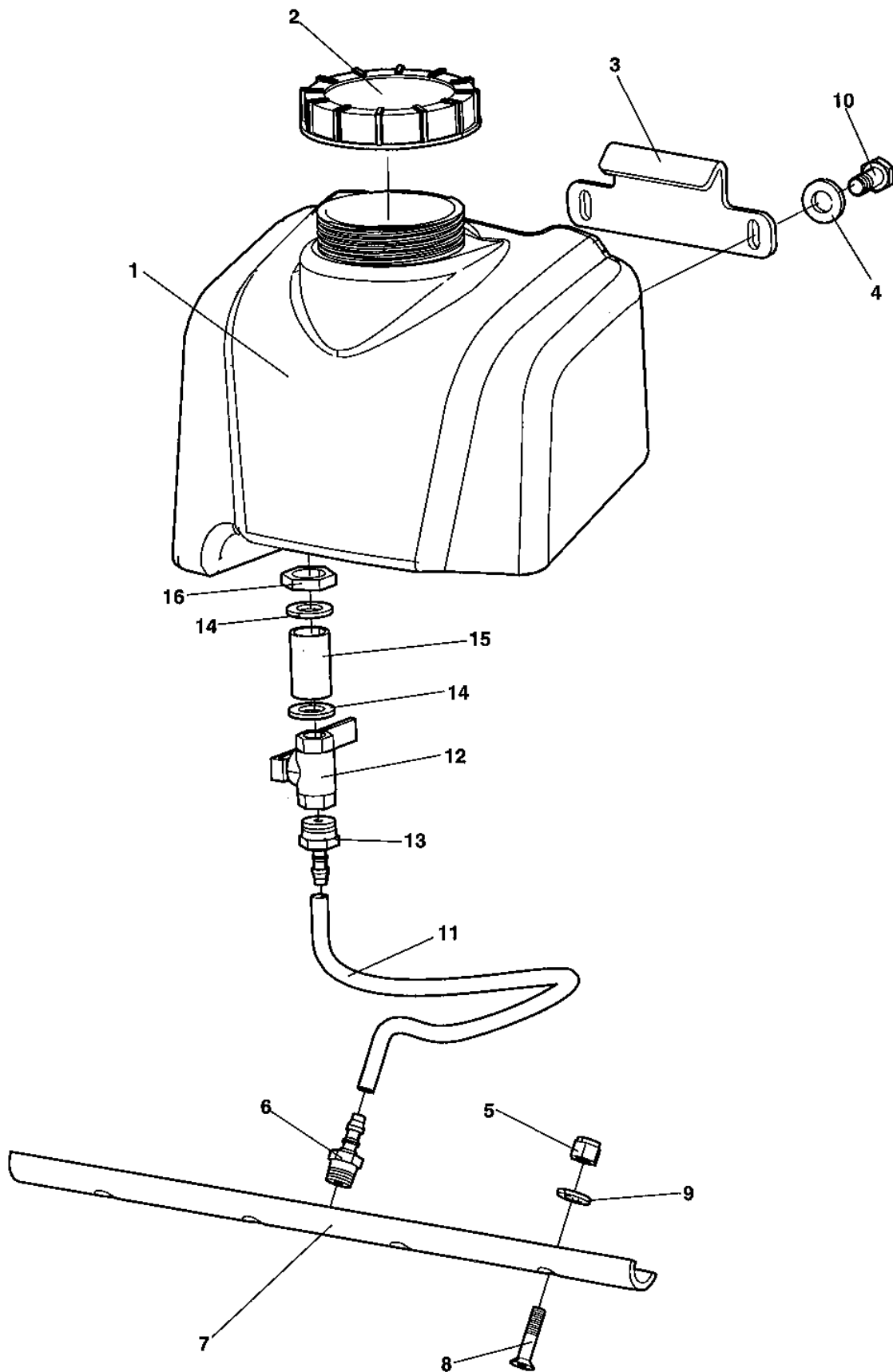
**Ground plate, frame and sprinkling system**

<b>Ref. No.</b>	<b>Part No.</b>	<b>Rem.</b>	<b>Qty</b>	<b>Description</b>	<b>Code</b>
10				Ground plate, engine plate and frame ( Page 6 )	
20				Sprinkling system ( Page 8 )	
30				Option, transport device ( Page 10 )	



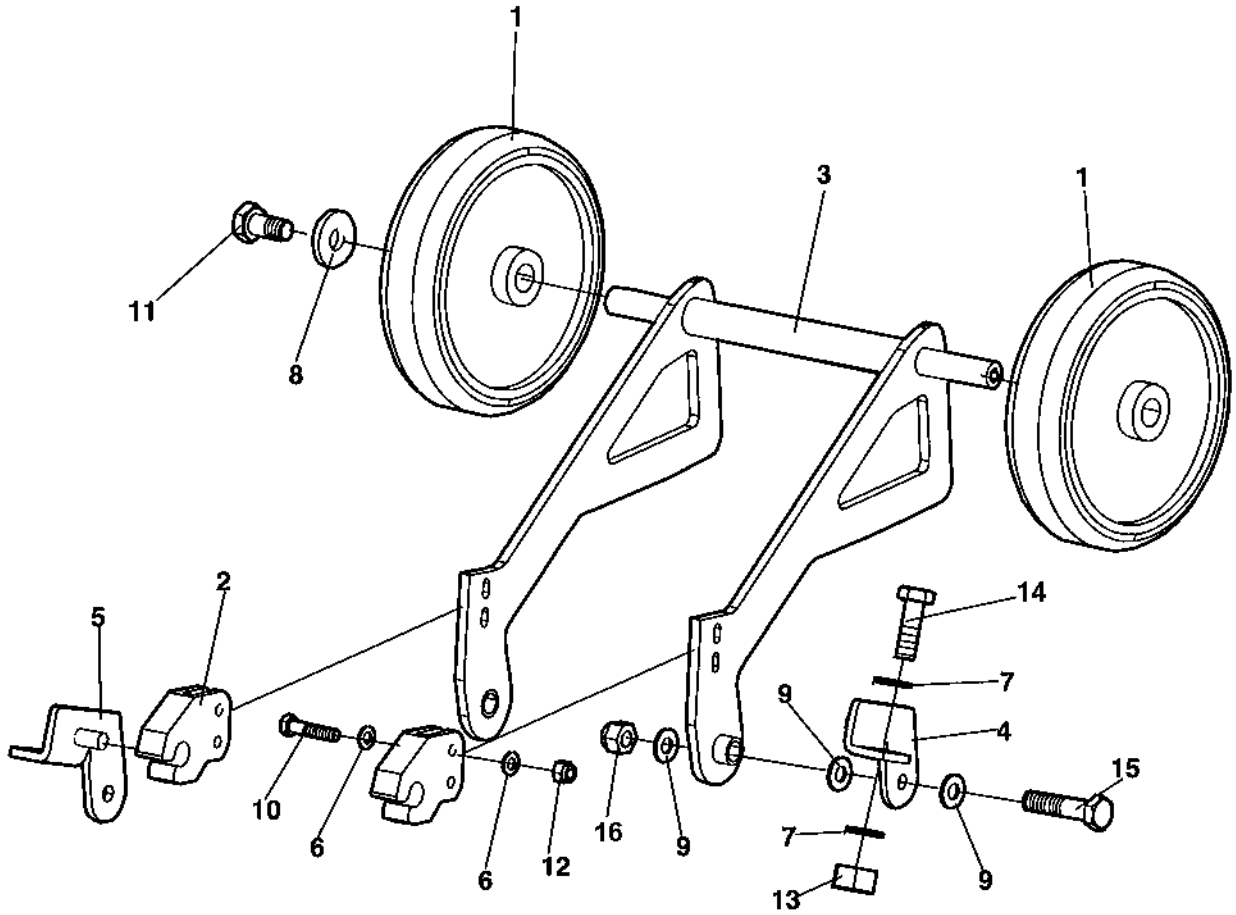
## Ground plate, engine plate and frame

Ref. No.	Part No.	Rem.	Qty	Description	Code
1	387609		1	Protective frame	
2	387610-01		1	Engine base	
3	280081		4	Shock absorber	
4	586018		4	Lock nut M10	
5	500043		4	Screw M10x16H 8,8	
6	500028		2	Screw M10-1,5x25 8,8	
7	570006		2	Nut M10	
8	904230		14	Washer 10,5x22x2	
9	388256		1	Ground plate	
10	389632		1	Insulation	
11	500028		2	Screw M10-1,5x25 8,8	



Ref. No.	Part No.	Rem.	Qty	Description	Code
1	387558		1	Water tank	
2	920819		1	Filler cap	D
3	388569		1	Bracket	
4	904640		2	Washer 8,4x22x3	
5	586002		4	Lock nut M6	
6	791694		1	Hose connection	
7	280173		1	Sprinkler tube	
8	513017		4	Screw	
9	904228		4	Washer 6,4x12x1,5	
10	500053		2	Screw M8-1,25x20 8,8	
11	902160	A	1XL	Plastic hose	
12	923140		1	Ball valve	D
13	901650		1	Nipple	
14	615002		2	Washer	
15	923570		1	Connection	
16	232150		1	Nut	

A) L=0,4m

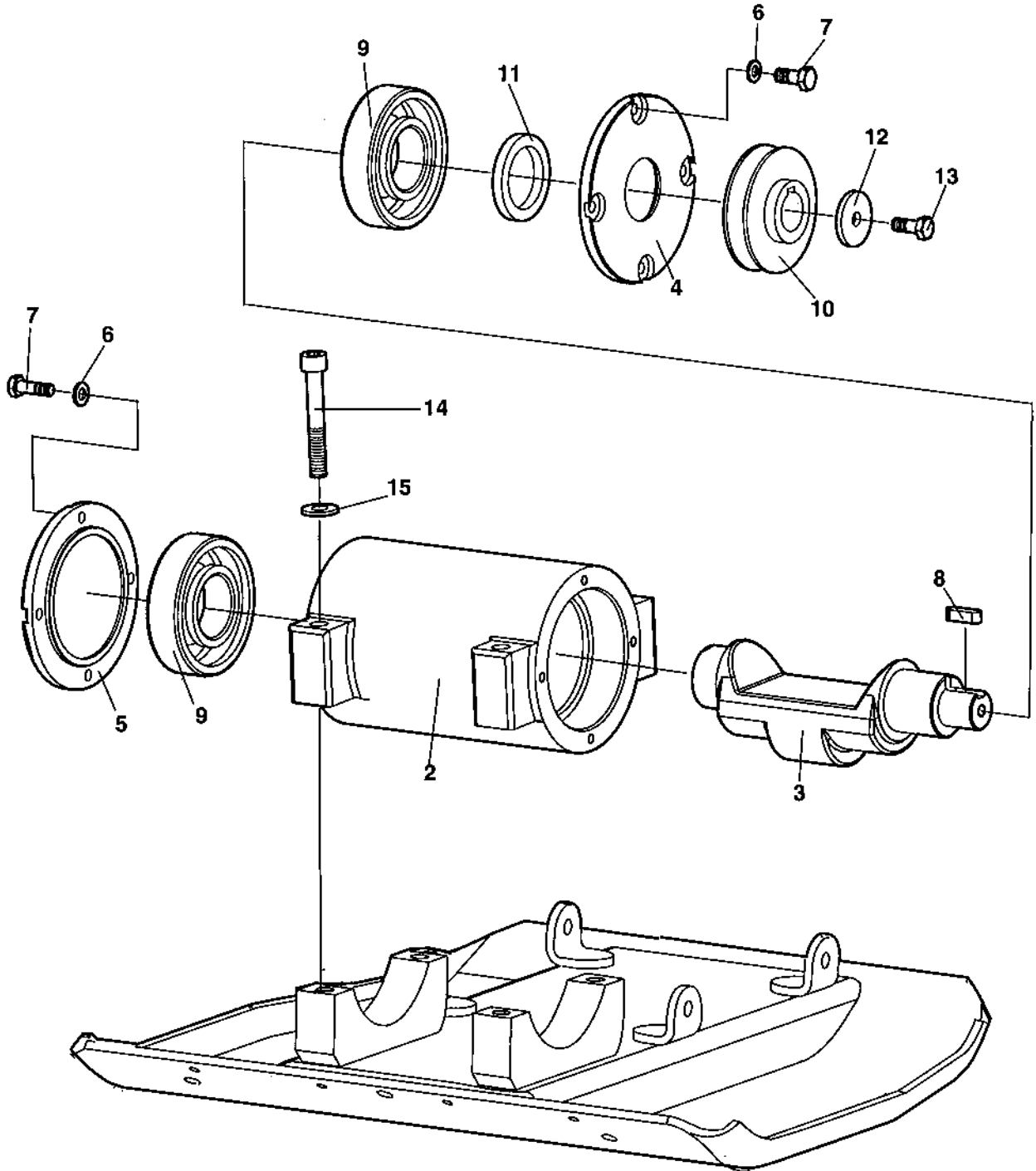


## Option, transport device

Ref. No.	Part No.	Rem.	Qty	Description	Code
1	383582		2	Wheel	
2	383584		2	Clip	
3	388029		1	Lever	
4	388030		1	Bracket	
5	388031		1	Bracket	
6	904281		8	Washer 5,3x10x1	
7	904229		8	Washer 8,4x16x1,5	
8	904640		2	Washer 8,4x22x3	
9	904230		6	Washer 10,5x22x2	
10	500087		4	Screw	
11	500019		2	Screw M8-1,25x16 8,8	
12	586001		4	Lock nut M5	
13	586003		4	Lock nut M8	
14	500022		4	Screw M8-1,25x30 8,8	
15	500161		1	Screw M10-1,5x45 8,8	
16	586018		2	Lock nut M10	

Ref. No.	Part No.	Rem.	Qty	Description	Code
10				Eccentric element ( Page 14 )	



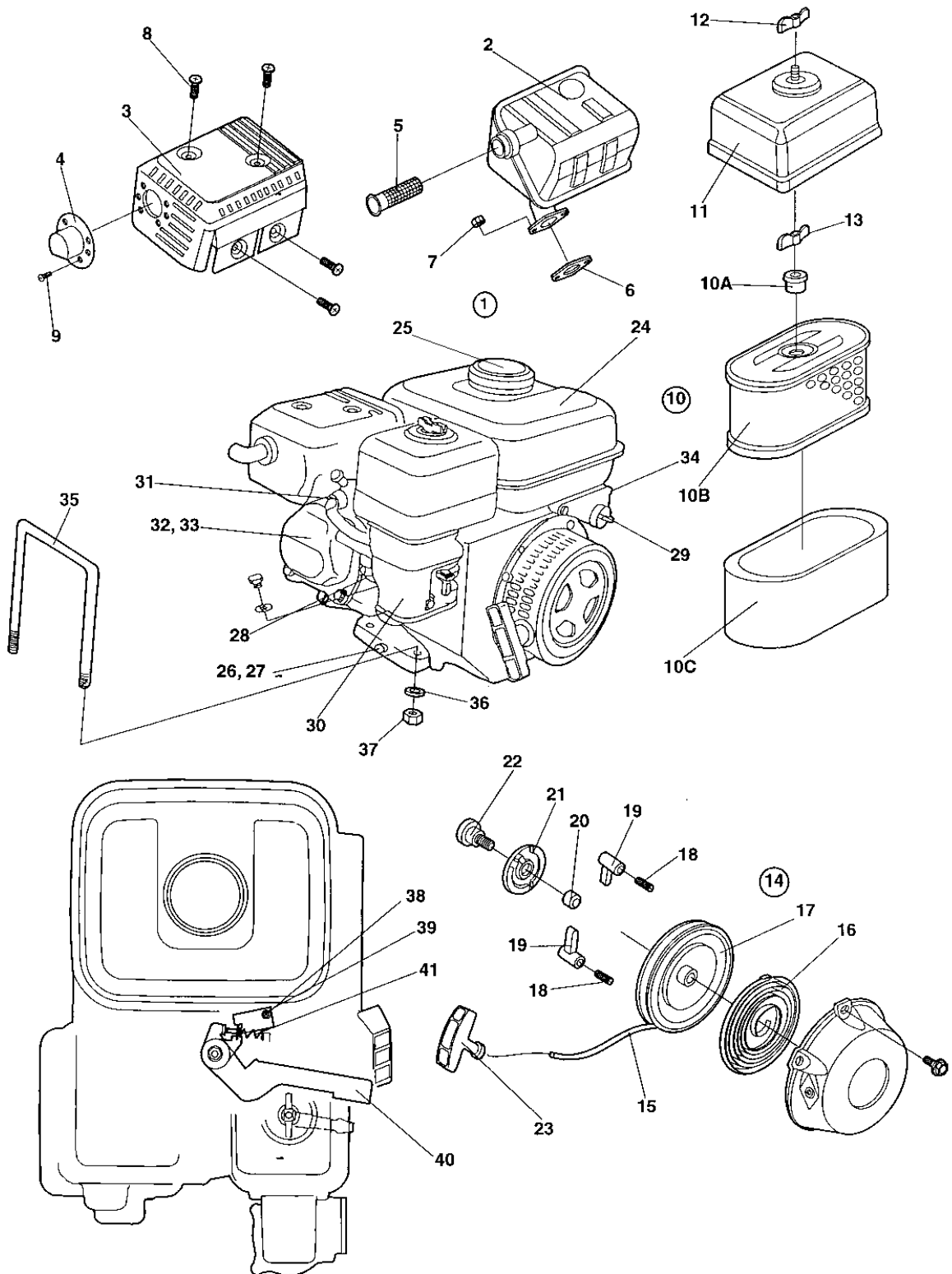


## Eccentric element

Ref. No.	Part No.	Rem.	Qty	Description	Code
1			1	Eccentric element, cpl	
2	150050801		1	.Housing	
3	381047		1	.Eccentric shaft	
4	381048		1	.Bearing cover	
5	381049		1	.Bearing cover	
6	904228		8	.Washer 6,4x12x1,5	
7	500040		8	.Screw M6-1x20 8,8	
8	350029		1	.Key	
9	902005		2	.Bearing	D
10	380418		1	.Pulley	
11	282377		1	.Sealing	
12	100502016		1	.Washer	
13	500053		1	.Screw M8-1,25x20 8,8	
14	904682		4	Screw	
15	904230		4	Washer 10,5x22x2	

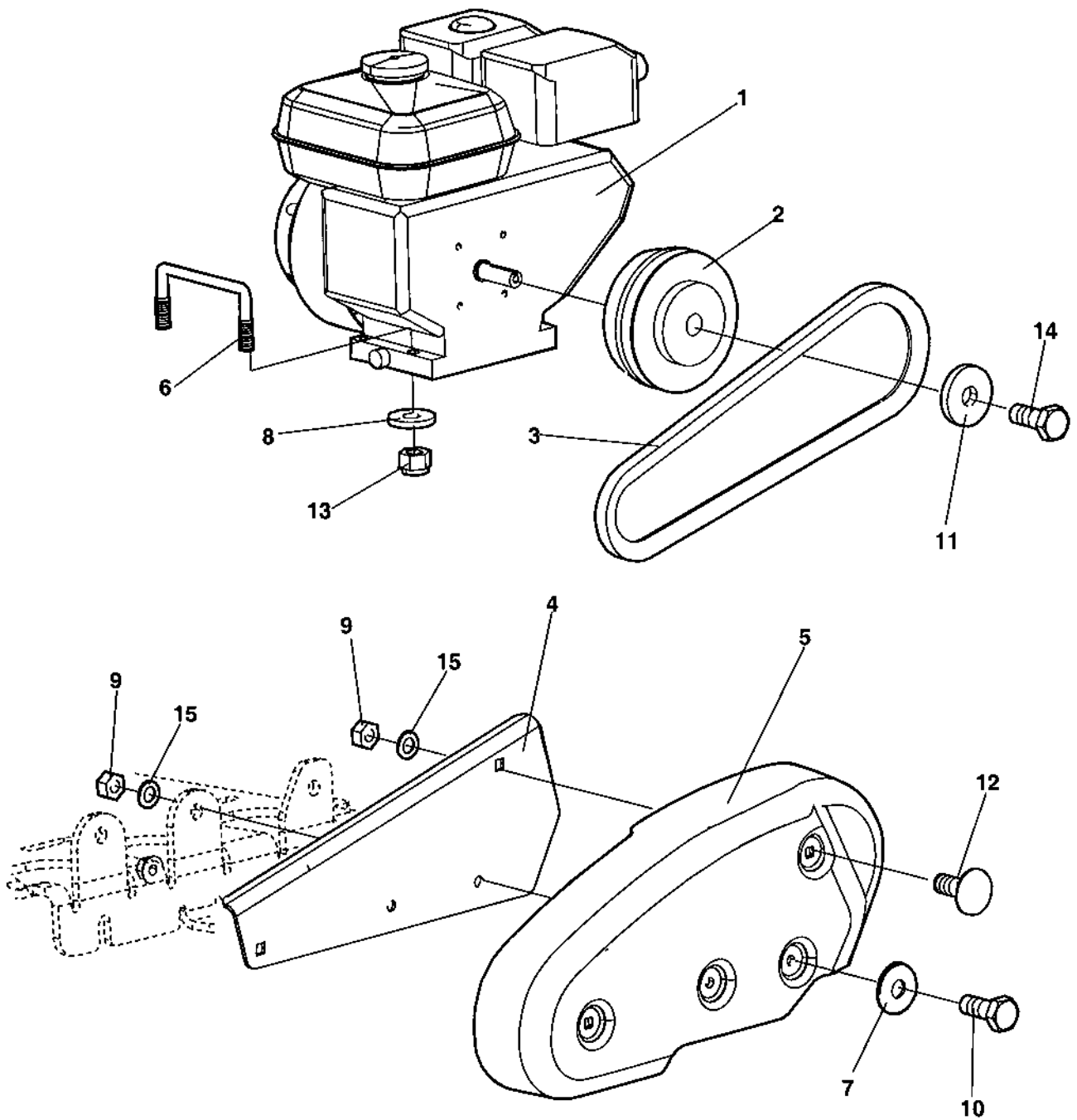
## Engine and engine installation

Ref. No.	Part No.	Rem.	Qty	Description	Code
10				Engine Honda GX 120 ( Page 18 )	
20				Engine installation ( Page 20 )	



Ref. No.	Part No.	Rem.	Qty	Description	Code
1	282190		1	Engine	
2	383031	A	1	.Catalyser	
	239059		1	.Muffler	
3	239060		1	.Muffler cover, upper	
4	239062		1	.Exhaust pipe	
5	238322		1	.Arrester, spark	
6	239063		1	.Gasket, muffler	
7	570005		2	.Nut M8	
8	533023		4	.Screw	
9	100900105		1	.Screw	
10	239064		1	.Air cleaner element, cpl	A
	239772		1	..Grommet	
			1	..Air filter	
	939868		1	..Air filter, outer	
11	239685		1	.Cover	
12	238314		1	.Nut	
13	239771		1	.Nut	
14	239065		1	.Recoil starter, cpl	D
15	239374		1	..Starter rope	B
16	239375		1	..Spring	B
17	239376		1	..Reel	
18	239377		1	..Spring	
19	239378		2	..Ratchet	
20	239379		2	..Friction spring	
21	239380		1	..Guide	
22	239381		1	..Screw	
23	239391		1	..Handle	B
24	239066		1	.Fuel tank	
25	239324		1	..Fuel tank cap	D
26	239682		2	.Plug	D
27	238303		2	.Gasket	D
28	238306		1	.Oil plug	D
29	238298		1	.Stop button	
30	239061		1	.Carburettor	
31	924842		1	.Spark plug	
32	238301		1	.Gasket	D
33	239854		1	.Gasket	D
34	239680		1	.Oil alert sensor	
35		B	2	U-clamp	
36		B	4	Washer	
37		B	4	Nut	
38	389212		1	.Lock washer	
39	508073		1	.Screw	
40	382714		1	.Throttle control arm	
41	282371		1	.Spring	

- A) Option  
 B) See section engine installation

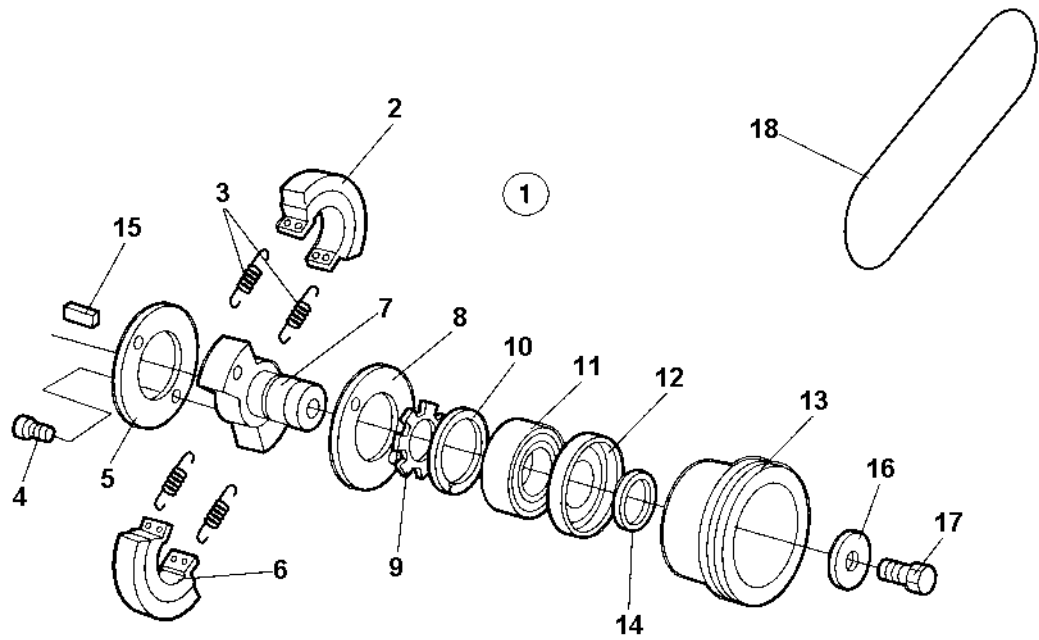


## Engine installation

Ref. No.	Part No.	Rem.	Qty	Description	Code
1			1	Engine Honda GX 120 ( Page 18 )	
2			1	Power transmission ( Page 24 )	
3	901652		1	V-belt	A
4	387612		1	Bracket	
5	387559		1	Belt guard	
6	282078		2	U-clamp	
7	601002		2	Washer	
8	904640		4	Washer 8,4x22x3	
9	570005		2	Nut M8	
10	500021		2	Screw M8-1,25x25 8,8	
11	904734		1	Washer 8,4x26x4	
12	791781		2	Cup square neck bolt	
13	586003		4	Lock nut M8	
14	500053		1	Screw M8-1,25x20 8,8	
15	904229		2	Washer 8,4x16x1,5	

Ref. No.	Part No.	Rem.	Qty	Description	Code
10				Power transmission ( Page 24 )	



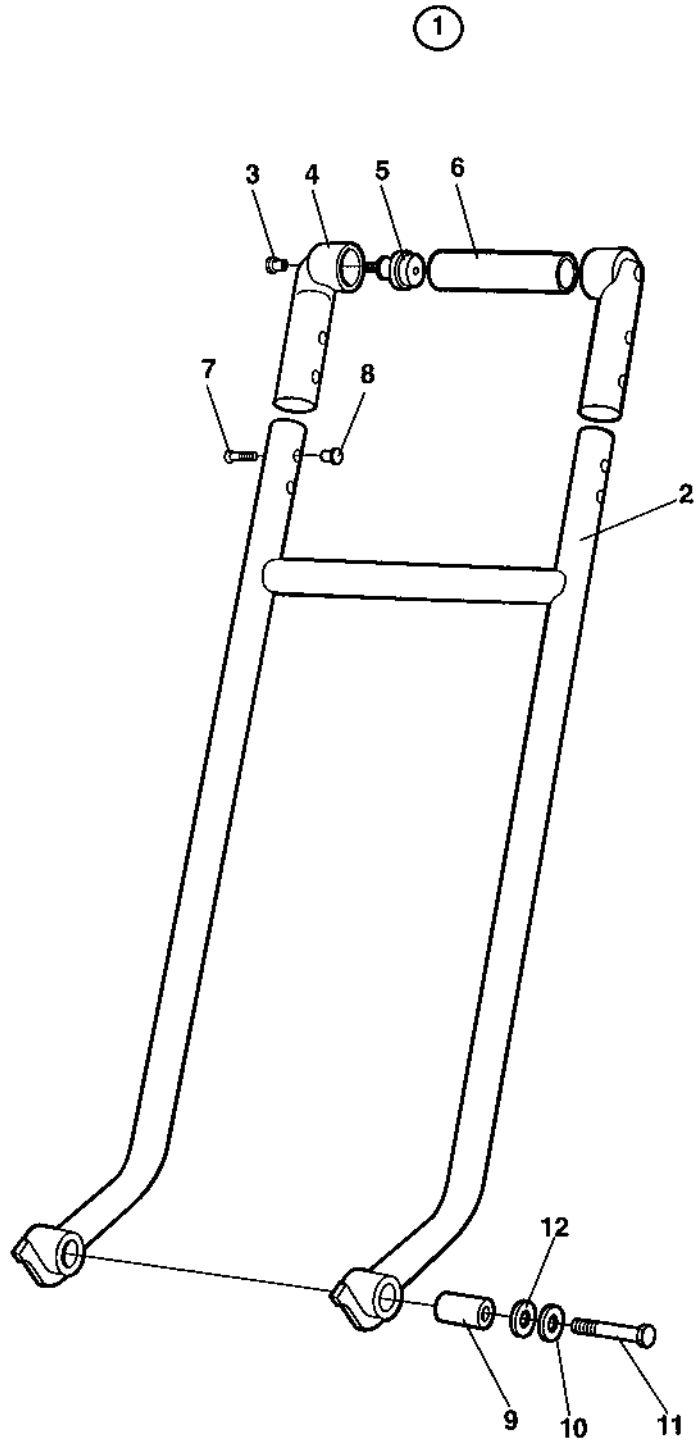


Ref. No.	Part No.	Rem.	Qty	Description	Code
1	282191		1	Centrifugal clutch, cpl	
2	928379		2	.Clutch lining	B
3	912498	C	2	.Spring	D
	912481	D	2	.Spring	B
4	535002		2	.Screw	
5	912480		1	.Cover	
6	912477		2	.Centrifugal weight	D
7	239855		1	.Hub	
8	239857		1	.Cover	
9	239539		1	.Retaining ring	
10	151023		1	.Retaining ring	
11	111178		1	.Ball bearing	D
12	134056		1	.Sealing ring	
13	938076		1	.V-belt pulley	
14	150015		2	.Snap ring	
15		A	1	Key	
16		B	1	Washer	
17		B	1	Screw	
18		B	1	V-belt	

- A) Supplied with engine
- B) See section engine installation
- C) Assembly cross to 912481
- D) Assembly cross to 912498

## Handle

Ref. No.	Part No.	Rem.	Qty	Description	Code
10				Handle ( Page 28 )	

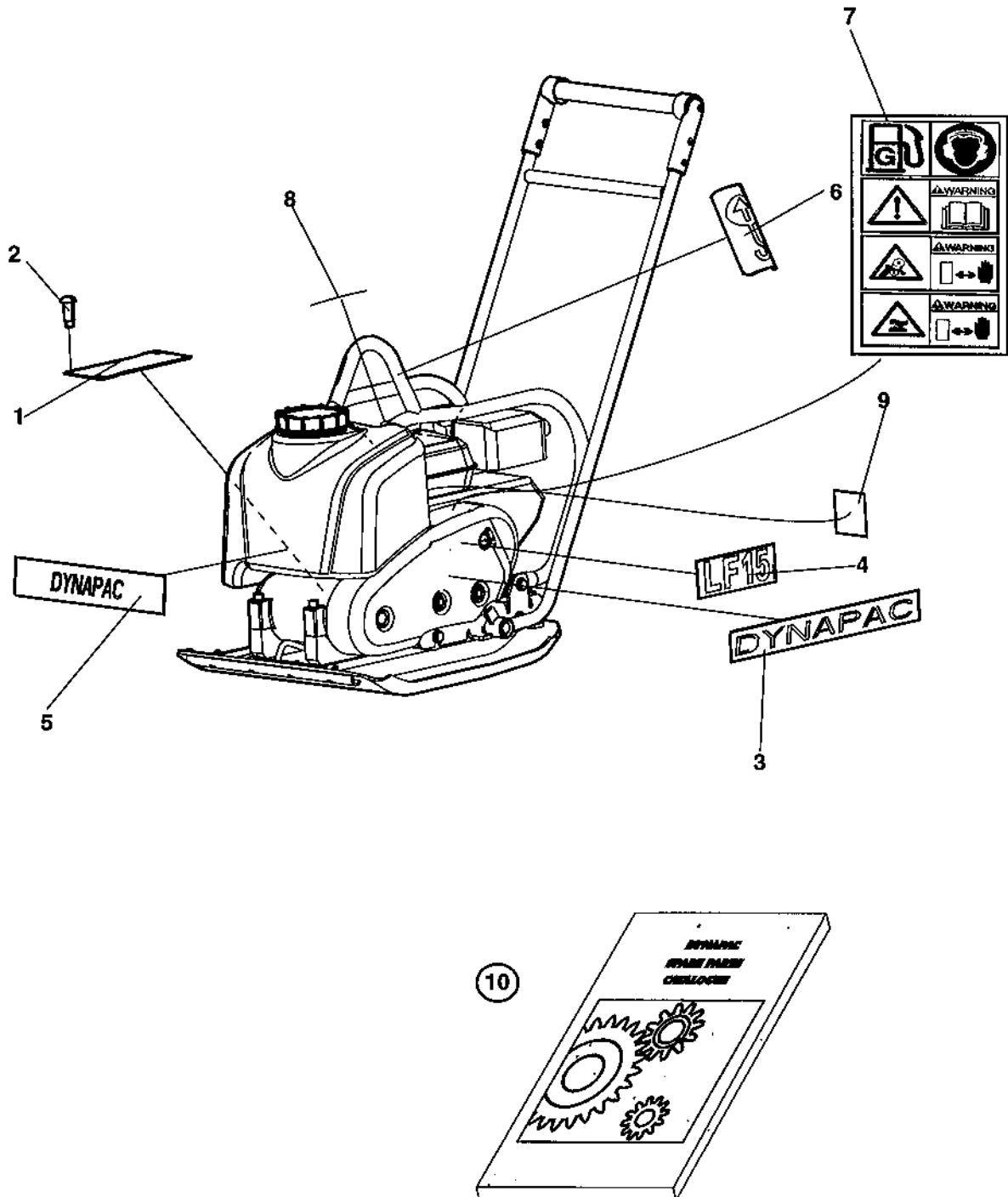


## Handle

Ref. No.	Part No.	Rem.	Qty	Description	Code
1			1	Handle, cpl	
2	280105		1	.Handle	
3	929212		2	.Nut Hexagon socket and oval shape	
4	280112		2	.Bracket	
5	280113		2	.Shock absorber	B
6	280162		1	.Handle bar cpl.	
7	928784		4	.Screw	
8	929213		4	.Nut	
9	280077		2	.Sleeve	
10	904213		2	.Washer 13x30x4	
11	500195		2	.Screw M12-1,75x50 8.8	
12				Not used on this model	
13					

## Decals and documentation

Ref. No.	Part No.	Rem.	Qty	Description	Code
10				Decals and documentation ( Page 32 )	



## Decals and documentation

Ref. No.	Part No.	Rem.	Qty	Description	Code
1	990001		1	Identification plate	
2	527001		4	Screw	
3	387652		1	Decal "DYNAPAC"	
4	388542		1	Decal "LF15"	
5	387640		1	Decal "DYNAPAC"	
6	281269		2	Decal "LIFT"	
7	389168		1	Decal	
8	791292		1	Decal "Sound power level" 104dB	
9	271419		1	Decal "WATER"	
10			1	Documenation	
			1	.Instruction book Honda	
			1	.Operation and maintenance ILF15	
			1	.Spare parts catalogue SLF015	
			1	.Warrenty registration certificate	
			1	.Warrenty conditions	